

**DRAFT PLAN OF SUBDIVISION**

102 CONFEDERATION STREET,  
HAMLET OF GLEN WILLIAMS

PART OF LOT 21, CONCESSION 9  
GEOGRAPHIC TOWNSHIP OF ESQUESING  
TOWN OF HALTON HILLS  
REGIONAL MUNICIPALITY OF HALTON



**OWNER'S AUTHORIZATION**

I HEREBY AUTHORIZE WELLINGS PLANNING CONSULTANTS INC. TO PREPARE AND SUBMIT THIS DRAFT PLAN OF SUBDIVISION TO THE TOWN OF HALTON HILLS FOR APPROVAL.

SIGNED: [Signature] DATE: August 11, 2020  
Glenn Williams Estates Inc.

**SURVEYOR'S CERTIFICATE**

I HEREBY CERTIFY THAT THE BOUNDARIES OF THE LANDS TO BE SUBDIVIDED AS SHOWN ON THIS PLAN AND THEIR RELATIONSHIP TO ADJACENT LANDS ARE CORRECTLY AND ACCURATELY SHOWN.

SIGNED: [Signature] DATE: 2020-08-11  
James M. Laws, Ontario Land Surveyor

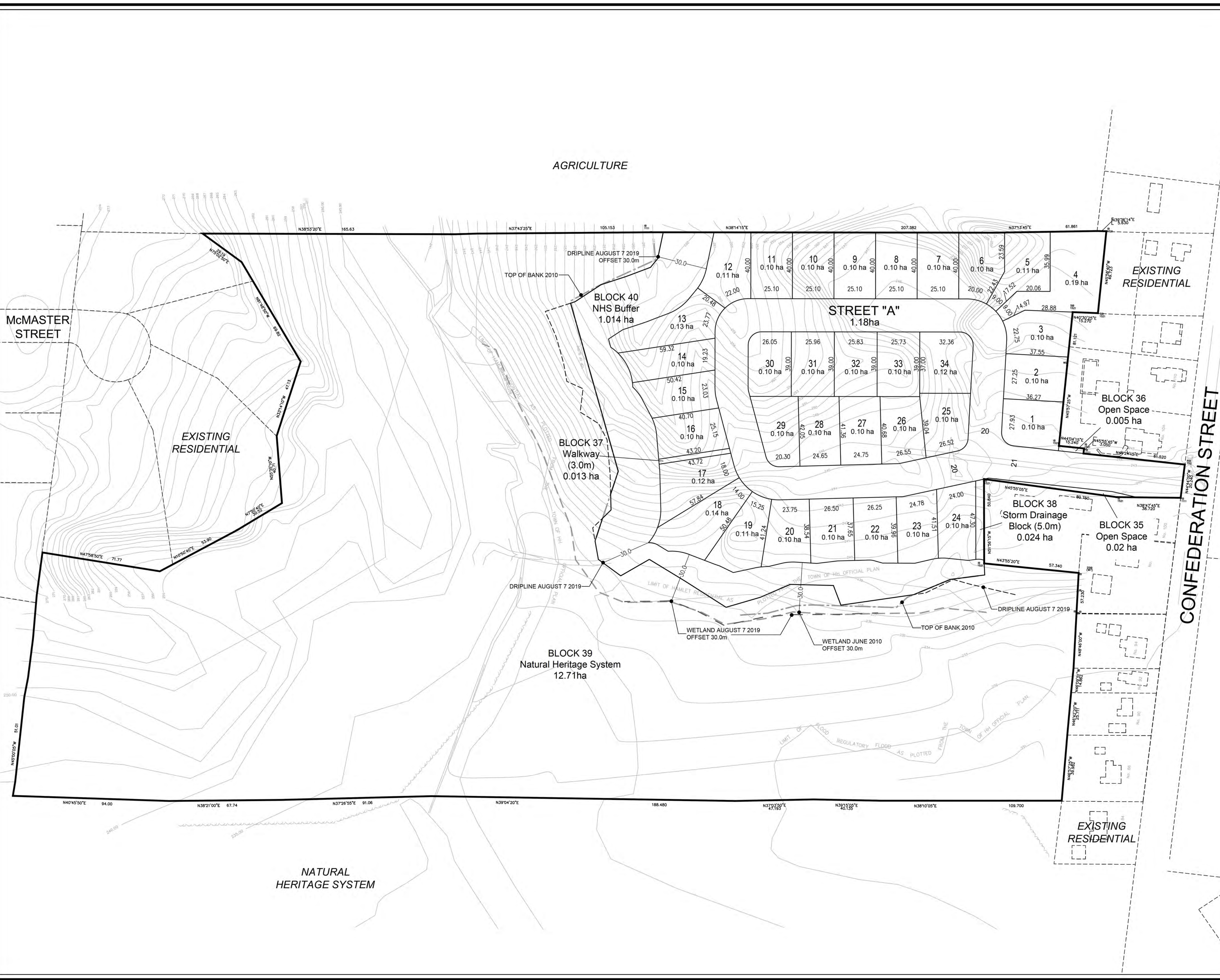
**Van Harten Surveying Inc.**  
423 Woodloch Street,  
Guelph ON N1H 3X3  
Tel: (519) 821-2763 Fax: (519) 821-2770

**ADDITIONAL INFORMATION (UNDER SECTION 51 (17) OF THE PLANNING ACT)**

- A) SHOWN ON PLAN
- B) SHOWN ON PLAN
- C) SHOWN ON PLAN
- D) SHOWN ON PLAN
- E) SHOWN ON PLAN
- F) SHOWN ON PLAN
- G) SHOWN ON PLAN
- H) MUNICIPAL AND PIPED WATER TO BE PROVIDED
- I) CLAY LOAM
- J) SHOWN ON PLAN
- K) SANITARY AND STORM SEWERS TO BE PROVIDED
- L) SHOWN ON PLAN

**LAND USE SCHEDULE**

Land Use	Lots/Blocks	Block Total	Area (ha)	Units
Single Detached	1-34	34	3.66	34
Open Space	35-36	2	0.025	
Walkway	37	1	0.013	
Storm Drainage Block	38	1	0.024	
Natural Heritage System (NHS)	39	1	12.71	
NHS Buffer (10m-30m)	40	1	1.014	
20m ROW (475m)			0.94	
21m ROW (112m)			0.24	
<b>Totals</b>	<b>40</b>	<b>40</b>	<b>18.63</b>	<b>34</b>



SCALE 1:1000 August 11, 2020  
DRAWN BY: BC CHECKED BY: GW

**Wellings**  
Planning Consultants Inc.

513 Locust Street,  
Unit B - Burlington,  
Ontario, L7S 1V3  
t - 905-681-1769  
e - glenn@wellingsplanning.ca