

# KPMB

Norval United Church  
14015 Danby Rd, Georgetown, ON

December 16, 2022  
Issued for ZBA Submission

## Waste Management Plan

Find below the waste management concept for the Norval United Church ZBA application.

### Waste Disposal - Typical Floors

Access to a waste chute room will be provided to all residents on levels 2-6. The waste chute has been located to land within the garbage storage and loading area at the ground floor level. Residents on these floors will use the chute to dispose of their waste.

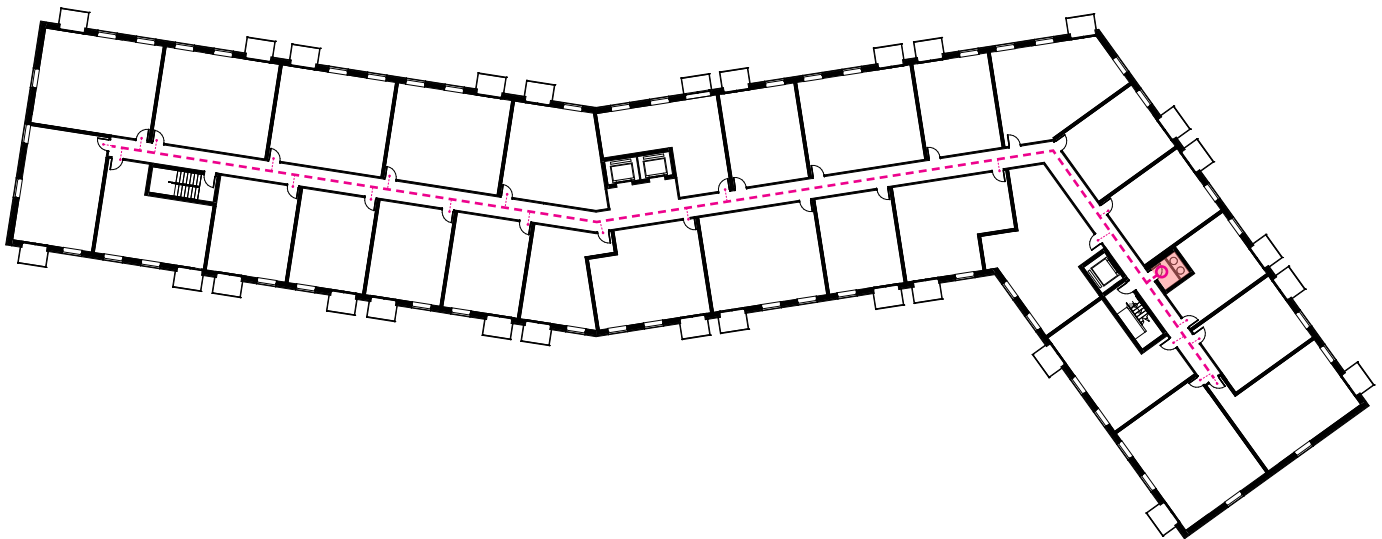


Figure 1: Typical residential waste disposal at garbage chute room.

--- Resident route to waste chute room on typical residential floors.

■ Waste chute room.

# KPMB

Norval United Church  
14015 Danby Rd, Georgetown, ON

December 16, 2022  
Issued for ZBA Submission

## Waste Disposal - Ground Floor Units

Residents located on the ground floor will have access to a waste storage room located off the main lobby area. Building operations will be responsible for collecting and relocating waste from this area to the main waste storage area located adjacent to the loading bay on collection days.

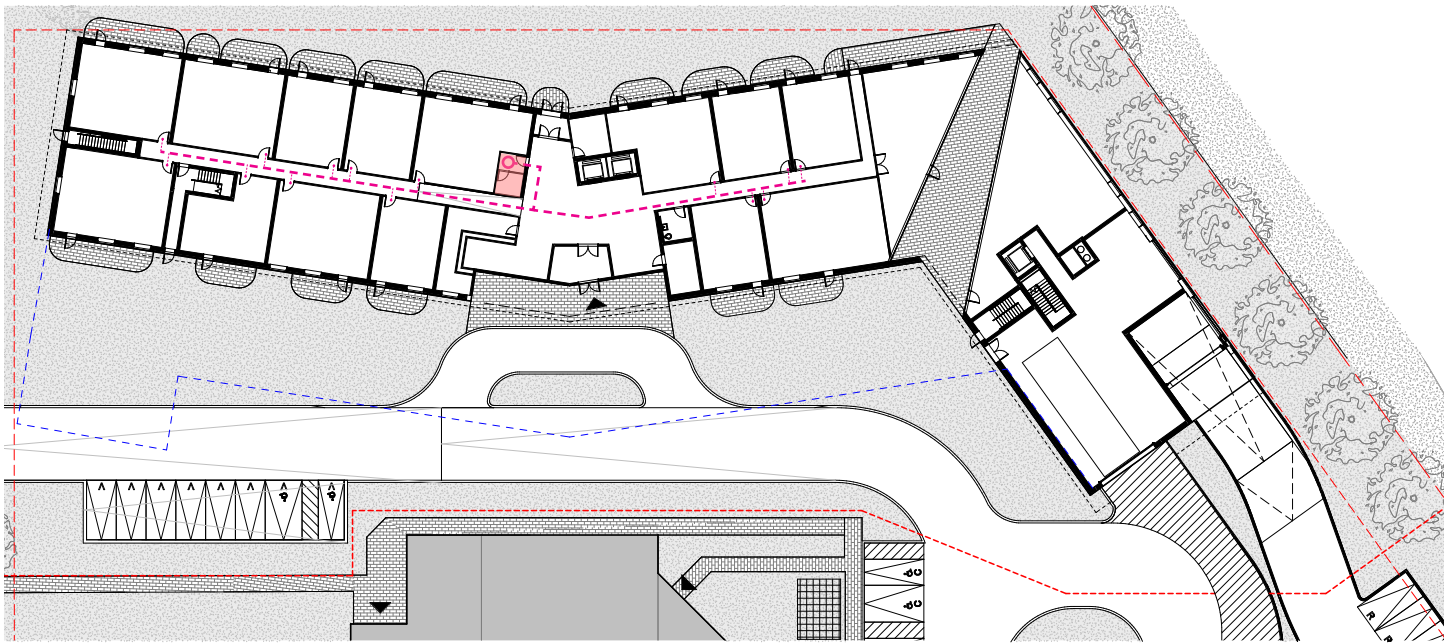


Figure 2: Ground floor residential waste disposal and storage. Building operations waste relocation route and main storage adjacent to loading bay.

--- Resident route to waste storage room.

Residential waste storage room.

# KPMB

Norval United Church  
14015 Danby Rd, Georgetown, ON

December 16, 2022  
Issued for ZBA Submission

## Waste Collection Days

Ahead of collection days, waste disposed via the waste chute from floors above, will be compiled and moved to the staging area at the front of the loading bay. Waste from the ground floor residential waste storage room will be moved to the main waste storage area ahead of collection days by building operations. The existing church waste storage area has been relocated to the NE corner of the church. Ahead of collection days church waste will be moved to the main loading area.

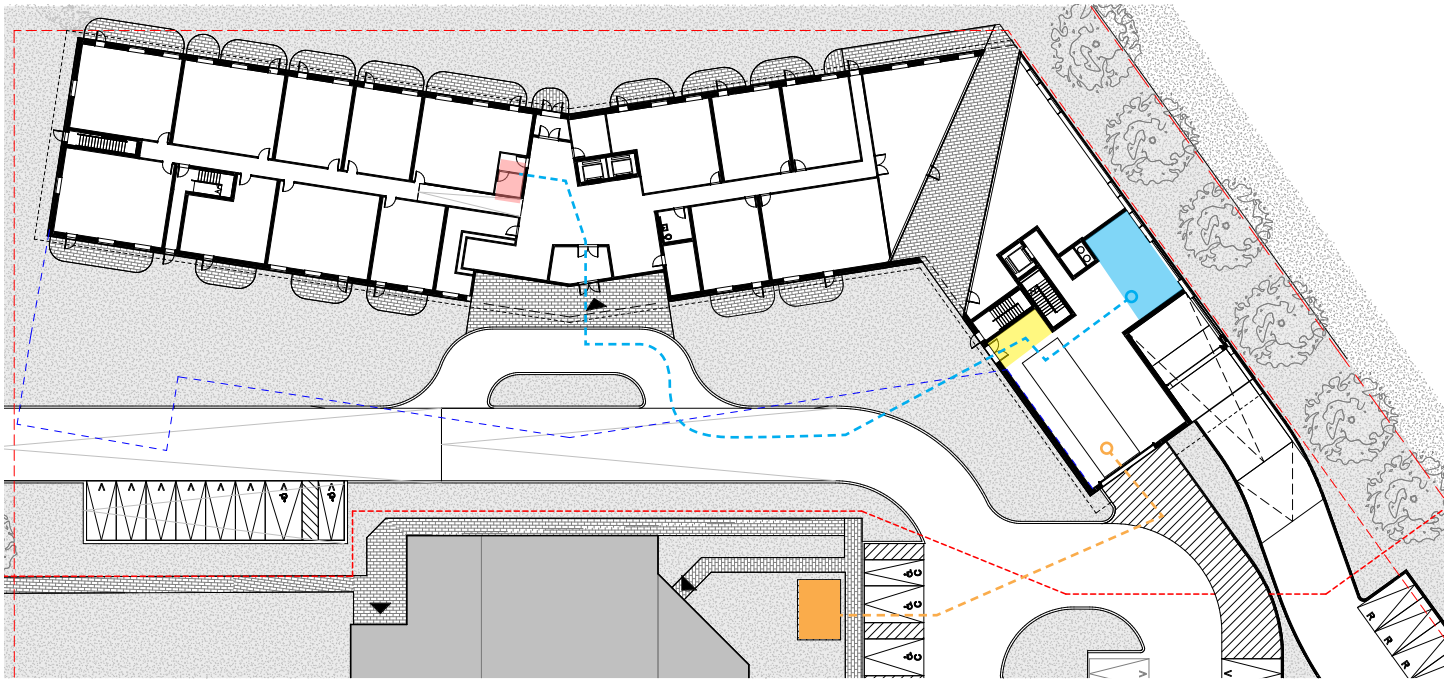


Figure 2: Ground floor residential waste disposal and storage. Building operations waste relocation route and main storage adjacent to loading bay. Church waste storage relocated to NE corner of church, with church waste moved to the main loading area ahead of collection days.

- Residential waste storage room.
- Building operations route to main waste storage.
- Main waste storage area.
- Staging area.
- Church waste storage.
- Church waste route on collection days.

# KPMB

Norval United Church  
14015 Danby Rd, Georgetown, ON

December 16, 2022  
Issued for ZBA Submission

## Loading Requirements

1 loading space has been provided with minimum dimensions of 3.5 metres by 12.0 metres, and a minimum height clearance of 7.5m, per the Zoning By-law 0050-2010.

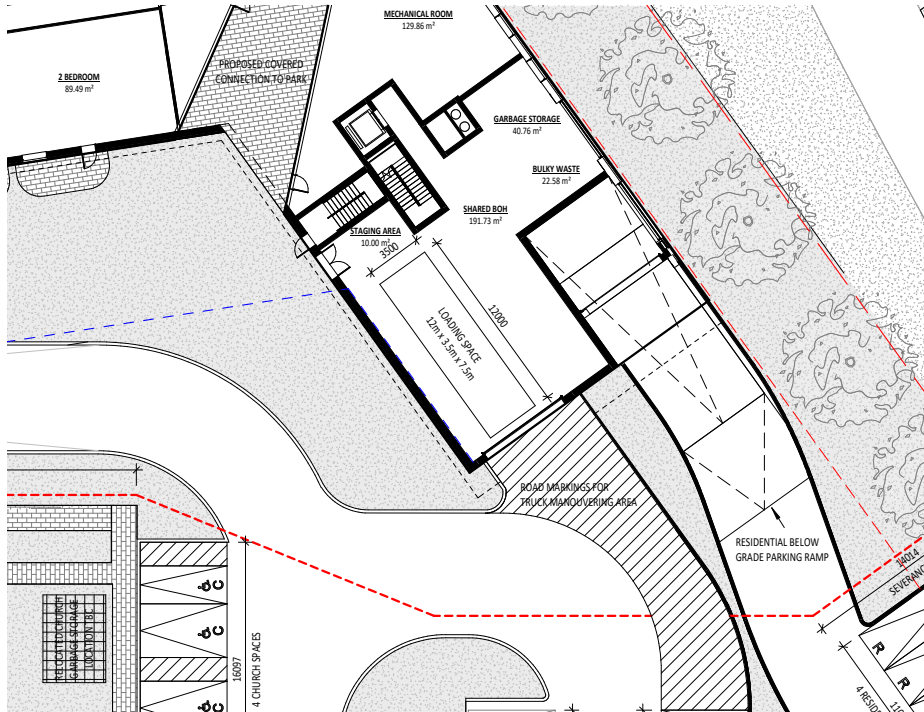


Figure 3: Loading space located at SE end of proposed building.

## Vehicle Manoeuvring

Vehicle manoeuvring diagrams can be found in Appendix D of the Transportation Considerations Report produced by The BA Group.

## Development Statistics

Statistics for the proposed development can be found on sheet A1-00 of the architectural set.