

G:\Drawings\2019\2019-66 Glen Williams\Correspondence\Tree Assessment Report r1.doc
File: Report
By E-mail: cmatson@mmland.ca

November 13, 2019

1404649 Ontario Ltd.
c/o Matson Planning and Development Inc.
2430A Bloor St. West
Toronto, ON M6S 1P9

Attention: Mr. Chris Matson

Dear Mr. Matson;

**Re: Glen Williams Subdivision – Confederation Street and Bishop Court
Tree Assessment Report**

As requested, MacKinnon & Associates completed an arboricultural review of two plantations on lands off of Confederation Street in Glen Williams, Halton Hills, proposed to be developed under a Draft Plan of Subdivision. Based on our review of the plantations and the available draft plan, we would offer the following:

Introduction

The arboriculture assessment of the north and west plantations was conducted by Catherine Hodgins, ISA Certified Arborist, on October 8, 2019. Surveyed tree locations were picked up by Van Harten Surveying Inc. at the time of the arboriculture assessment. The area of the site under arboriculture review is adjacent to Confederation Street and extends approximately 320m into the site. It is primarily sloped terrain and comprised of two tree plantations, a naturalized meadow and seasonal water course. A level 2 basic visual assessment by foot at ground level only was used to collect data to determine tree preservation possibilities. Refer to Figure 1, Tree Assessment Sketch.

Existing Condition of West Plantation

The west plantation along Confederation Street consists of *Pinus strobus* (White Pine) and *Picea glauca* (White Spruce) and range in size from 15cm-50cm D.B.H. Trees are spaced approximately 1.8m apart in rows and the rows are spaced approximately 2.4m apart. Trees along the perimeter of the plantation are generally in fair condition facing the exterior of the plantation while the interior portion of those trees is very poor to dead. The interior plantation trees are generally in very poor to dead condition. Opportunistic species comprised mainly of *Juglans nigra* (Black Walnut) and *Populus sp.* (Poplar species) are located along the periphery of the plantation and in a small clearing in the northwest corner.



Image 1. View of west plantation looking northwest



Image 2. View of west plantation looking south east



Image 3. Interior of west plantation



Image 4. Interior of west plantation

Existing Condition of North Plantation

The north plantation along the northwest property line consists of *Pinus strobus* (White Pine), *Picea pungens* (Colorado Spruce) and *Picea glauca* (White Spruce) and range in size from 25cm-55cm D.B.H. In this plantation the trees and rows are spaced approximately 1.8m apart. Trees along the perimeter of the plantation are generally in fair condition facing the exterior of the plantation while the interior portion of those trees is very poor to dead. The interior plantation trees are generally in very poor to dead condition. Opportunistic species such as *Prunus serotina* (Black Cherry) and *Acer negundo* (Manitoba Maple) are located along the north edge of the plantation.



Image 5. Exterior of north plantation



Image 6. Interior of north plantation

Methodology

Selected trees were tagged based on the following criteria:

- Diameter at breast height of 10cm or more
- Suitable for retention based on species and condition

Data was collected for each tagged tree in the following categories (refer to Figure 2 for Existing Tree Inventory List):

- Species (botanical name)
- Diameter at breast height (DBH in cm)
- Canopy diameter (drip line in m)
- Assessment of condition
- Additional notes (structural issues, external evidence of disease, decay or insects, etc.)

Assessment of condition criteria as follows:

1. Good condition evaluated as above 75% alive, negligible structural issues.
2. Fair condition evaluated as 50-75% alive, minor structural issues.
3. Poor condition evaluated as below 50% alive, major structural issues.

Discussion

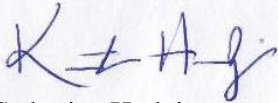
Both of the plantations observed are comparable in health and composition. Comprised of 2-3 species of tightly spaced conifers in fair to poor condition, they are at risk of disease and insect infestation and are expected to decline further over time. Disturbance of plantation edges will increase the risk of failure, as it will expose interior trees already in poor condition to more significant environmental stresses.

Of the trees deemed suitable for retention based on species and condition, Figure 1 illustrates those that can be potentially retained with the proposed draft plan development. It is also possible to preserve portions of the west and north plantations as sections occur in the open space block.

Conclusions

1. Preservation of the plantations as untouched natural features is not expected to be successful long term due to the current age, spacing and condition of the trees, lack of diversity in the species and corresponding risks of insect and disease infestation.
2. Preservation of certain trees described in Figure 1, as well as sections of the plantations that lie within the proposed open space block is possible with the proposed Draft Plan of Subdivision.
3. If preservation of portions of the plantation(s) is considered, areas to be cleared should include a buffer to residential lots, as the newly exposed interior trees will be at greater risk of failure.

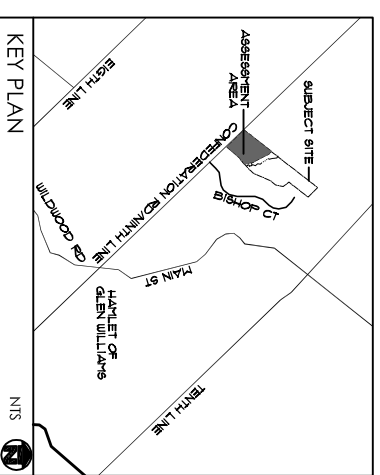
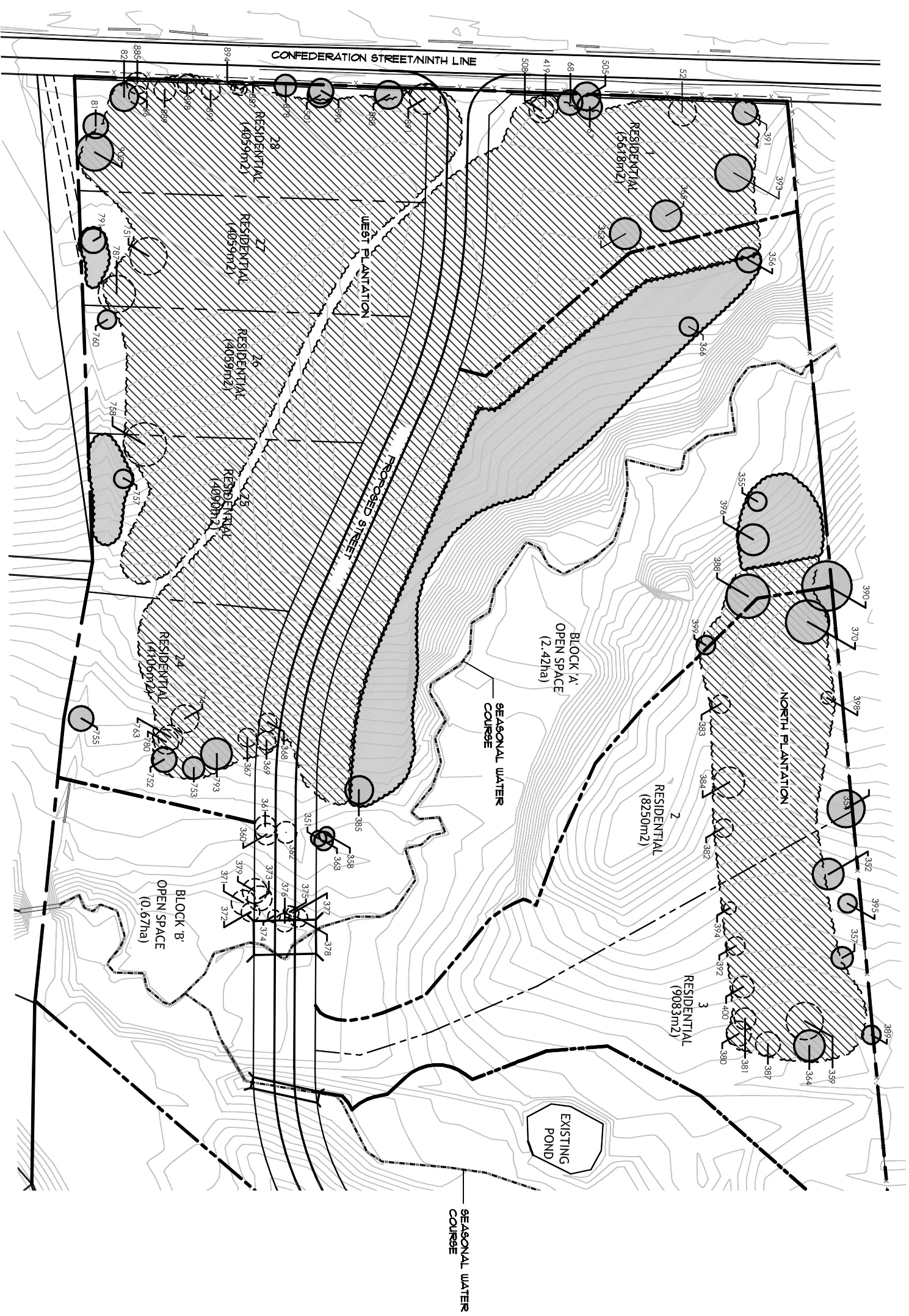
Yours truly,
MacKinnon & Associates



Catherine Hodgins
ISA Certified Arborist ON-2258A
ISA Tree Risk Assessment Qualified



Aaron Hill BLA, OALA
Landscape Architect



LEGEND	
	EXISTING TREE TO BE PRESERVED
	EXISTING TREE STAND TO BE PRESERVED
	EXISTING TREE TO BE REMOVED
	EXISTING TREE STAND TO BE REMOVED

- NOTES:**
1. PROPOSED LOTTING AS PER WELLINGS PLANNING CONSULTANTS INC.
 2. TOPOGRAPHIC INFORMATION AND SURVEYED TREE LOCATIONS AS PER VAN HARTEN SURVEYING INC.
 3. SITE VISIT FOR TREE ASSESSMENT BY MACKINNON & ASSOCIATES ON OCTOBER 9, 2019.



1. Nov. 13, 19 issued for review	CMH
2. No date	BY
3. No date	BY
REVISIONS	

CHARLESTON HOMES DEVELOPMENT
 CONFEDERATION RD & BISHOP CT
 HAMLET OF GLEN WILLIAMS

Tree Assessment Sketch

Mackinnon & Associates
 Providing Solutions in Urban, Landscape and Environmental Planning
 a division of BOYCE ORRIS INC.

550 Parkside Drive, Unit A-21, Waterloo, Ontario N2L 5V4
 Tel. (519) 725-5140 Fax (519) 725-5144

DRAWN BY: CMH	DESIGNED BY: CMH	APPROVED BY: AMB
PROJECT NO: 2019-66	SCALE: 1:1500	DATE: September 2019
TITLE: TREE ASSESSMENT	SHEET: 1	
November 13, 2019		

Figure 1