

**PART OF LOT 19  
CONCESSION 9**  
GEOGRAPHIC TOWNSHIP OF ESQUESING  
**TOWN OF HALTON HILLS**  
REGIONAL MUNICIPALITY OF HALTON

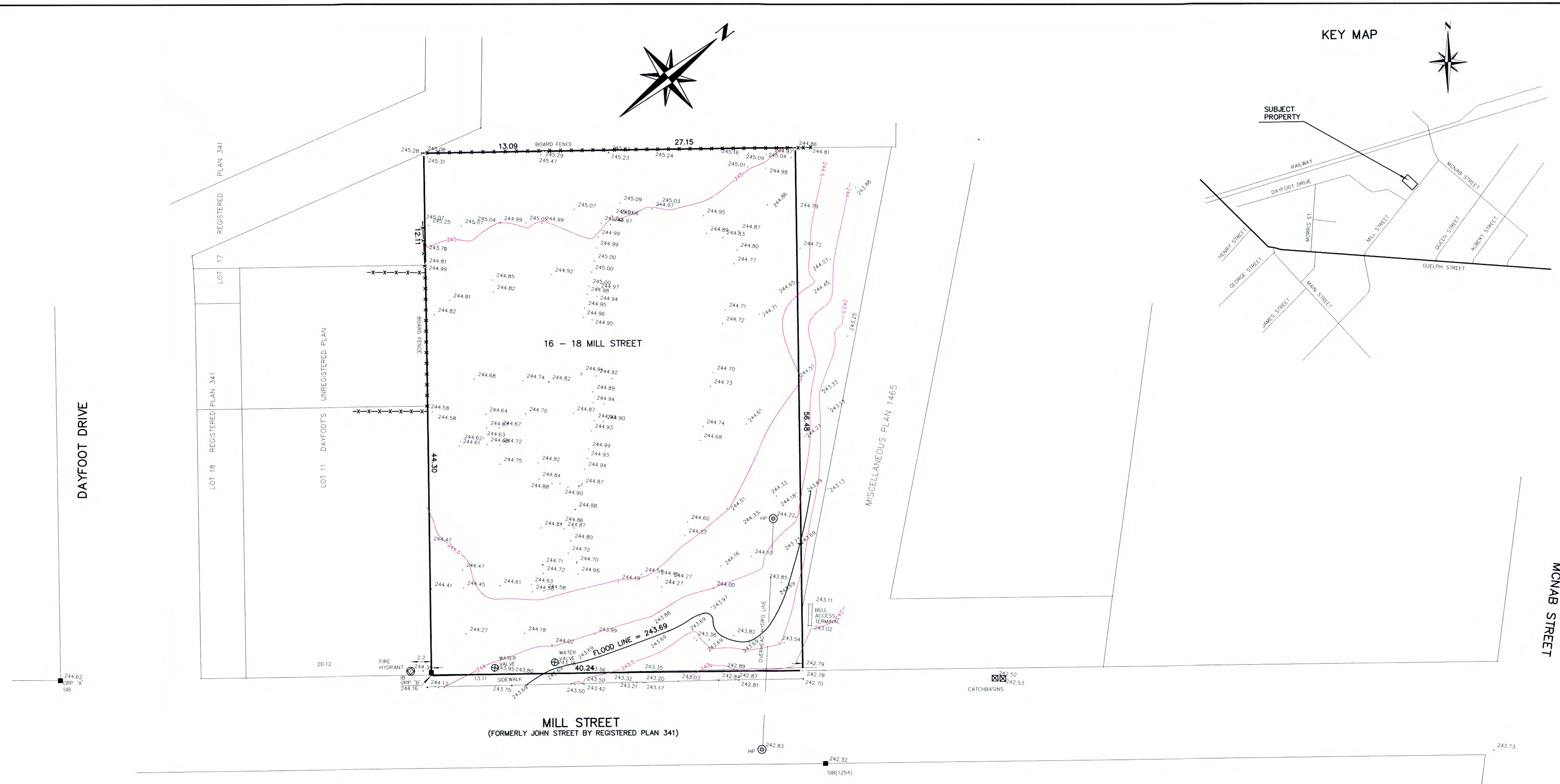
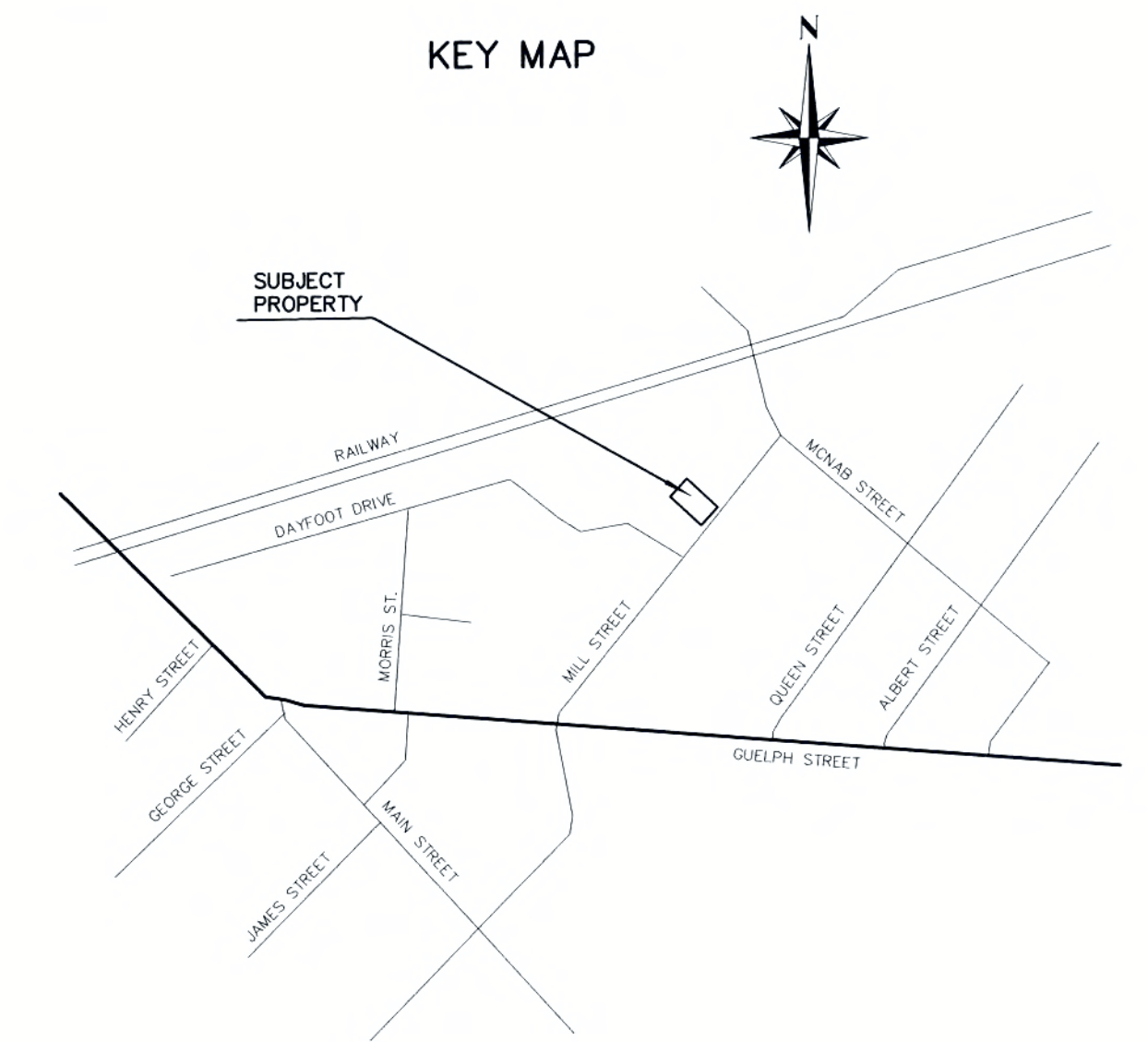
J. R. FINNIE O.L.S.  
SCALE: 1:250 METRIC



**METRIC**  
DISTANCES AND COORDINATES SHOWN ON THIS PLAN ARE IN METRES AND CAN BE CONVERTED TO FEET BY DIVIDING BY 0.3048.

**CAUTION**  
THIS IS NOT A PLAN OF SURVEY AND SHALL ONLY BE USED FOR THE PURPOSE INDICATED IN THE TITLE BLOCK.

FLOOD LINE ELEVATION OF 243.69 WAS PROVIDED BY CREDIT VALLEY CONSERVATION. GEODETIC DATUM WAS NOT GIVEN.



**NOTES**

ELEVATIONS ARE GEODETIC, DERIVED FROM SIMULTANEOUS OBSERVATIONS OF SATELLITES, AS CORRECTED BY NRCAN'S PPP SERVICE, AND ARE RELATED TO THE CGVD 2013 DATUM.  
VELOCITY MODEL FOR NAD83(CSRS) NAD83v70VG  
DISTANCES SHOWN ON THIS PLAN ARE GROUND AND CAN BE CONVERTED TO GRID BY MULTIPLYING BY THE COMBINED SCALE FACTOR OF 0.99966.

COORDINATES ARE TO AN URBAN ACCURACY AS PER s.14(2) OF O.REG. 216/10.

POINT ID	ELEVATION	
ORP 'A'	244.62	
ORP 'B'	244.16	

**SURVEYOR'S CERTIFICATE**

I CERTIFY THAT:

1. THIS SURVEY WAS COMPLETED ON THE 10th DAY OF JANUARY, 2020.

JANUARY 17, 2020  
DATE

*J. R. Finnie*  
J. R. FINNIE  
ONTARIO LAND SURVEYOR

CLIENT: AGK MULTI-RES GP LTD.

**J. R. FINNIE**  
ONTARIO LAND SURVEYOR  
BOX 31, ERIN ON NOB 1T0  
PH (519) 833-2380 FAX (519) 833-0208  
EMAIL: rfinnie@finnie.com  
www.jrfinnie.com