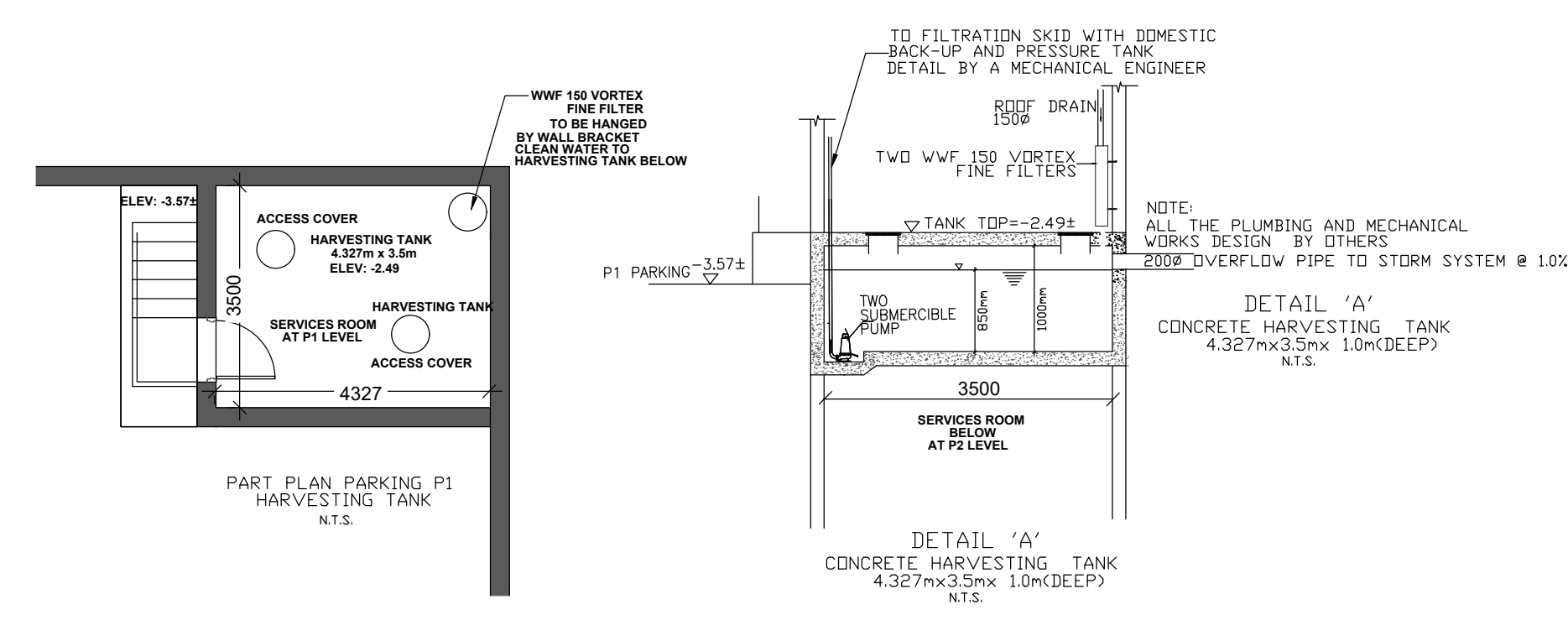
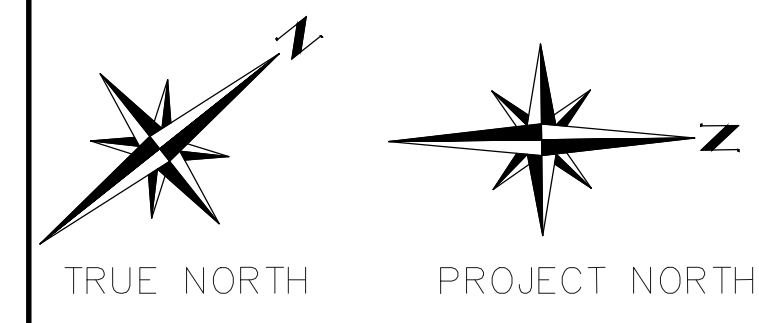


KEY MAP



NOTE:
THIS DRAWING TO BE READ IN CONJUNCTION WITH GRADING PLAN(SG1) & GENERAL NOTES AND DETAIL DRAWINGS (NOTES-004)

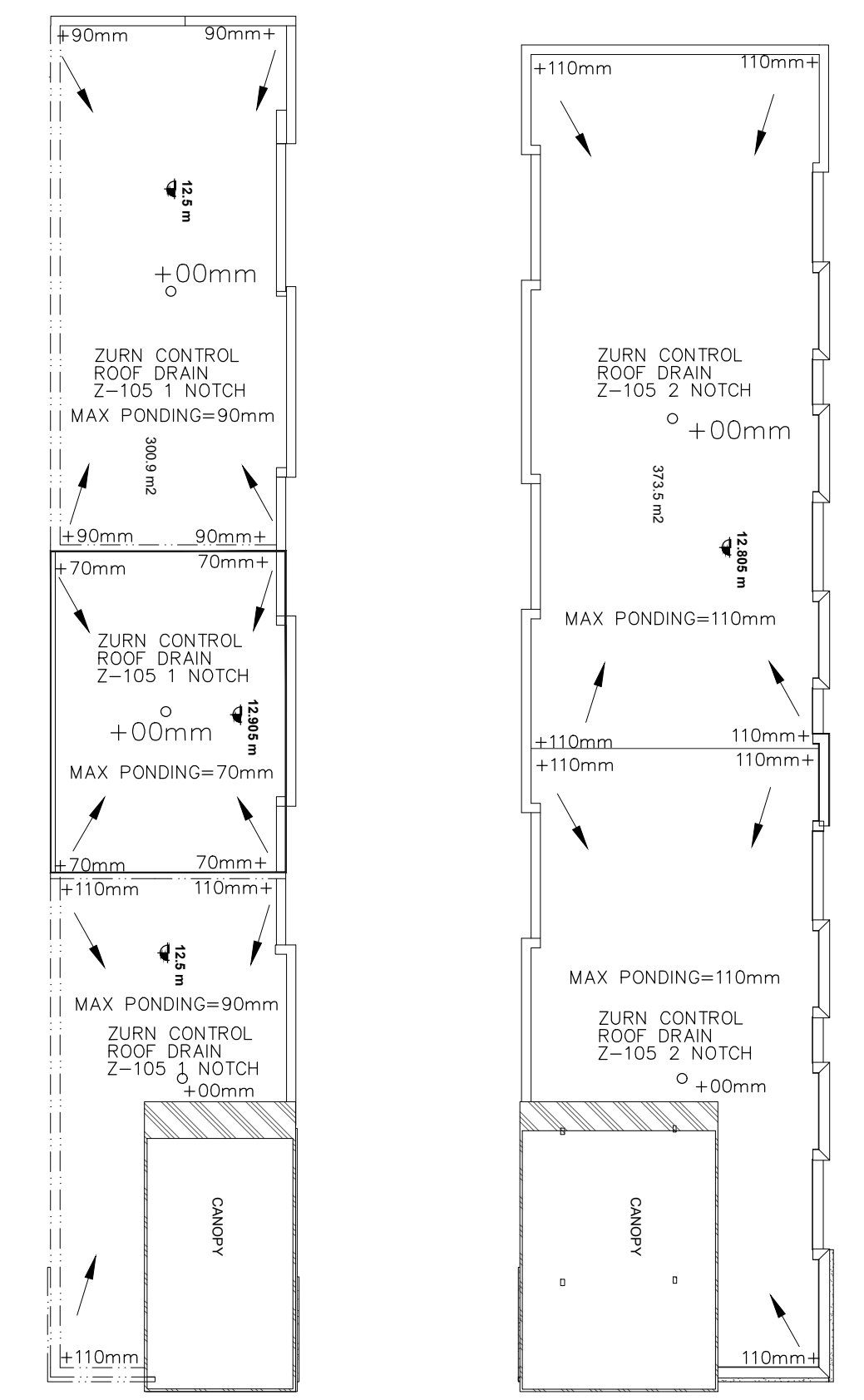
LEGEND

PROP STM MH	PROPOSED STORM MAINTENANCE HOLE
PROP SAN MH	PROPOSED SANITARY MAINTENANCE HOLE
PROP CB	PROPOSED CATCH BASIN
⊕	PROP DETECTOR CHECK VALVE
⊙	PROP DOMESTIC WATER METER
⊖	PROP BACK CHECK VALVE

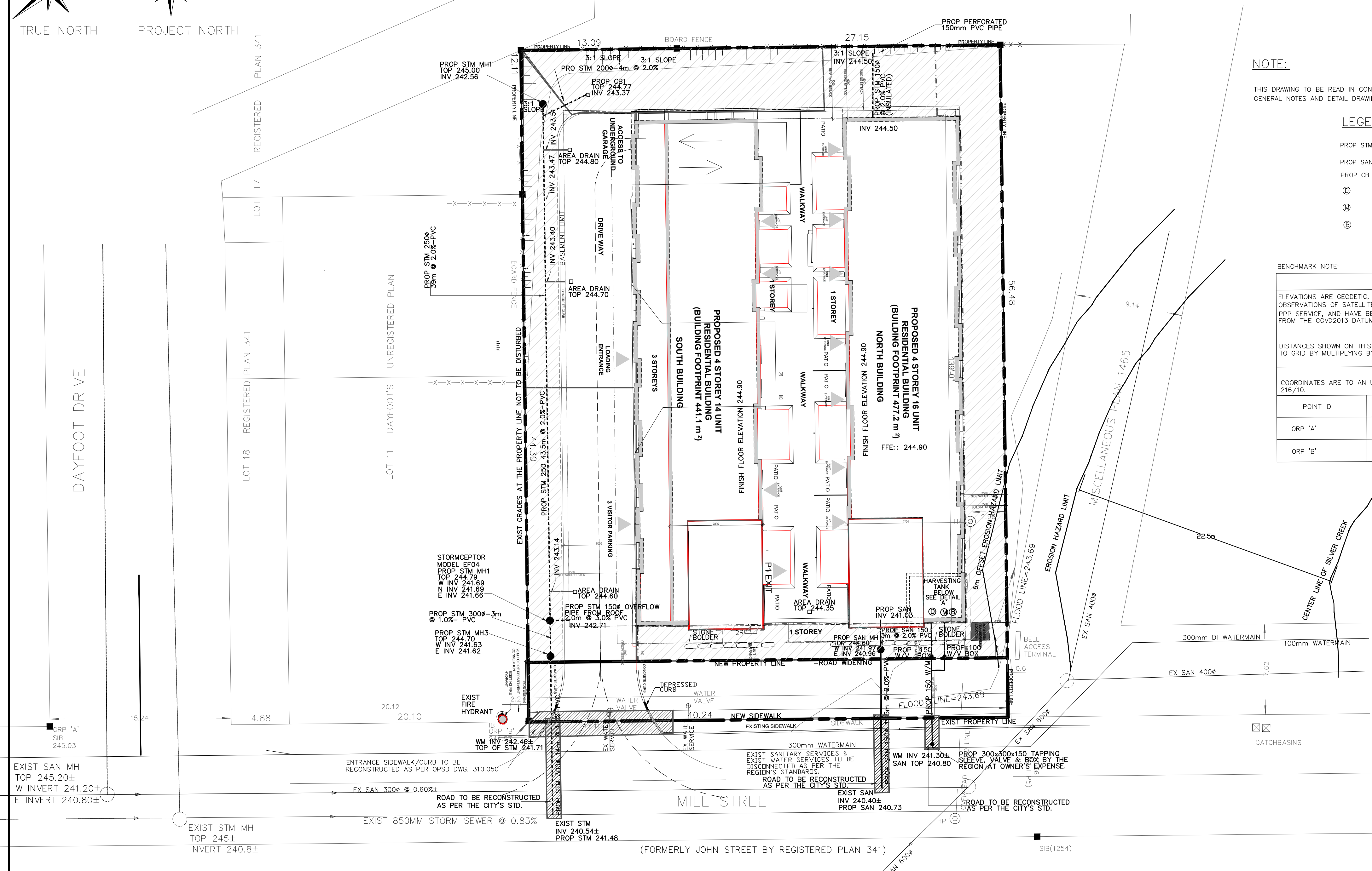
BENCHMARK NOTE:
ELEVATIONS ARE GEODETIC, DERIVED FROM SIMULTANEOUS OBSERVATIONS OF SATELLITES, AS CORRECTED BY NRCAN'S PPP SERVICE, AND HAVE BEEN CONVERTED FROM THE FROM THE CGVD2013 DATUM TO THE CGVD1978 DATUM.

DISTANCES SHOWN ON THIS PLAN ARE GROUND AND CAN BE CONVERTED TO GRID BY MULTIPLYING BY THE COMBINED SCALE FACTOR OF 0.99966.

POINT ID	ELEVATION
ORP 'A'	245.03
ORP 'B'	244.57



ROOF PLAN



BENCHMARK NOTE

TOPOGRAPHIC INFORMATION MEASURED 2007. THIS IS NOT A PLAN OF SURVEY.
BENCHMARK: IHBM 064
ELEVATION: 253.45
TEMPORARY BENCHMARK ELEVATION: 254.28
TOP OF RAILROAD SPIKE IN THE SOUTH SIDE OF THE FRS HYDRO POLE EAST OF NORMANDY BOULEVARD ON GUELPH STREET.
The location and extent of all existing utilities are not necessarily shown on this plan, and where shown, are to be considered approximate only. All Contractors shall inform themselves of the exact location and extent of all existing services prior to the start of construction, and shall assume all liabilities for damage to them or delays resulting from their actual extent and location.

NO.	REVISION	DATE	BY	CHKD.
4	REVISED AS PER THE TRCA'S COMMENT.	APR 11 2023	MFI	
3	ISSUED FOR APPROVAL AS PER SP CHANGES & TOWN'S COMMENTS	FEB 28 2023	MFI	
2	ISSUED FOR APPROVAL	APR 29 2022	MFI	
1	ISSUED FOR APPROVAL	DEC 09 2020	MFI	

LEGEND

UNDERGROUND UTILITIES	
○ LS	LIGHT STANDARD
○ TL	TRAFFIC LIGHT
○ S	SIGN
○ B	BELL POLE
○ H	HYDRO POLE
○ W	WATERMANS
○ G	GASMANS
○ B	BELL CABLES
○ C	CAP OR PLUG
○ G	GUY AND ANCHOR
○ M	MANHOLE EXISTING
○ M	MANHOLE PROPOSED
○ C	CATCHBASIN EXISTING
○ C	CATCHBASIN PROPOSED
○ S	STANDARD IRON PIPE

**TOWN OF HALTON HILLS
REGION OF HALTON**

PREMIER ENGINEERING SOLUTIONS
CIVIL ENGINEERS

3294 ALPACA AVENUE, MISSISSAUGA ONTARIO L5M 7V3
PHONE: (905) 817-1294 FAX: (905) 817-1299

PROJECT ENGINEER
APR 11, 2023

**RESIDENTIAL DEVELOPMENT
16-18 MILL STREET
HALTON HILLS, ON
SITE SERVICING PLAN**

FIELD NOTES	DATE
SCALE 1:200	
DWG No. SS1	
MUN. REF. No.	REV.
SITE PLAN APPLICATION	4