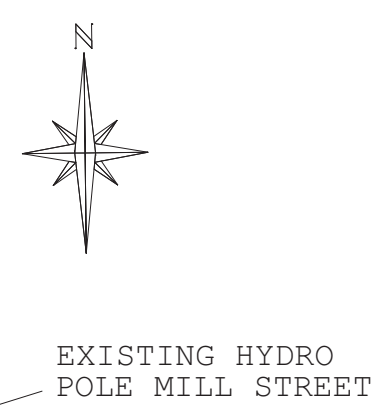


1 SITE PLAN
E01 SCALE: 1:100

Calculation Summary							
Label	CalcType	Units	Avg	Max	Min	Avg/Min	Max/Min
Beyond Property Line	Illuminance	Fc	0.05	0.3	0.0	N.A.	N.A.
Front Canopy	Illuminance	Fc	2.80	11.7	0.0	N.A.	N.A.
Parking Lot	Illuminance	Fc	1.01	2.6	0.2	5.05	13.00
Walkway	Illuminance	Fc	4.14	11.2	0.4	10.35	28.00

Luminaire Schedule										
Tag	Symbol	Qty	Label	Arrangement	Total Lamp Lumens	LLF	Description	Lum. Watts	Total Watts	Lum. Lumens
LS1A	□	3	VP-S-24NB-55-4K-T4-BLC	SINGLE	N.A.	1.000	VP-S-24NB-55-4K-T4-BLC	55.8	167.4	3709
N1	○	7	SRT1-35-4K7-5C-UNV	SINGLE	N.A.	1.000	SRT1-35-4K7-5C-UNV	36.3	254.1	4729
W1	□	12	LN2-48L-20-4K7-3	SINGLE	N.A.	1.000	LN2-48L-20-4K7-3-UNV-DBT	20	240	2234



CLIENT:

ISSUES and REVISIONS		
ISSUE	DATE	DESCRIPTION
A	MAR. 30, 2023	ISSUED FOR SPA

DRAWINGS ARE NOT TO BE SCALED. USE ONLY DRAWINGS MARKED "ISSUED FOR CONSTRUCTION". CONTRACTOR TO CHECK AND VERIFY ALL DIMENSIONS AND CONDITIONS ON SITE AND REPORT ANY DISCREPANCIES TO THE CONSULTANT BEFORE PROCEEDING WITH THE WORK. THIS DRAWING IS THE COPYRIGHT PROPERTY OF THE CONSULTANT AND MUST BE RETURNED UPON REQUEST.

Millennium Engineering
MECHANICAL & ELECTRICAL CONSULTANTS
Creating High-Performance Buildings

Mechanical | Electrical | Energy Efficiency | Commissioning

5045 MAINWAY
Suite 211
Burlington, Ontario L7L 5H9
Phone (905) 631-9294
Fax (905) 631-7778
millennium@mill-eng.com

DESIGNED FA	DRAWN SA	APPROVED FA
SCALE 1:100		DATE DEC 2020

PROJ.
16 & 18 MILL STREET APARTMENTS
16 & 18 MILL ST., GEORGETOWN, ON

DWG.
**ELECTRICAL SITE PLAN
PHOTOMETRIC DATA**

CAD FILE 20-033 E01SP	PROJ. No. 20-033
--------------------------	----------------------------

DWG. No.
E01SP_A

VIPER S SERIES

SMALL VIPER LUMINAIRE

Light Standard 13'

DATE: _____ LOCATION: _____
 TYPE: **LS1A** PROJECT: _____
 CATALOG #:

BEACON

SPECIFICATIONS

Intended Use:
 The Beacon VIPER luminaire is available with a choice of different LED Waferpack configurations and optical distributions designed to replace HID lighting up to 400W MH or HPS.

Construction:
 • Manufactured with die cast aluminum.
 • Coated with a powder finish that meets ASTM B117 corrosion test requirements and ASTM D2232 coating and base of adhesion test requirements.
 • General hardware is corrosion resistant.
 • One piece optical cartridge system consisting of an LED engine, LED lenses, cones, gasket and stainless steel bezel.
 • Cartridge is held together with internal brass standoffs soldered to the board so that it can be field replaced as a one piece optical system.
 • Two piece silicone and micro-culular polyethylene front glass encase a weather proof seal around each individual LED.

Electrical:
 • 120V through 277V, 50 Hz to 60 Hz (LUNA) or 347V or 480V input.
 • Power factor is 0.95 at full load.
 • Dimming options are standard, but must conform to the manufacturer's dimming specifications to avoid external dimming controls.
 • Capable for external dimming either: that luminaire may carry no more than 50% of rated load and is certified for use at 600VAC at 90°C or higher.
 • The luminaire has a maximum LED life of 50,000 hours at 100% duty cycle.
 • The housing is designed for an optional built-in photo control sensor.
 • Ambient operating temperature -40°C to 40°C.
 • Surge protection -30KA.
 • Optional 7 pin ANSI C136.1-2013 base socket photo control available. Compatible with ANSI C136.1 external wireless control devices.
 • **IP65** rating - protects luminaire from dust, dirt and moisture. The bezel and photometric enclosure are made of polycarbonate and are not subject to UV degradation in the event of an interruption of the power supply, or faulty wiring connections to the luminaire. The enclosure must be certified with other 0-10V control devices (occupancy sensors, external dimmers, etc.).

Control Options:
 • Available with an optional photo infrared PIR motion sensor capable of detecting motion 90° around the luminaire. When no motion is detected for the specified time, the Motion Restores sensor reduces the wattage to factory reset level, and only the light level accordingly. When motion is detected by the PIR sensor, the luminaire returns to full wattage and full light output. Please contact Beacon Products if project requirements vary from standard configuration.
 • Available with Evergent for optional set dimming. Smart dimming with remote dimmer or smart dimming based on time of night (see www.beaconlighting.com/evergent).
 • In addition, VIPER can be specified with **Sitelight™** wireless control system for reduction in energy and maintenance cost while improving light quality 24/7. See www.beaconlighting.com/siteinfo for more details.

Installation:
 • Mounting options for horizontal, aerial, vertical, or traditional arm mounting available. Mounting hardware included.

Finish:
 • IP65 polyester powder coat electro-statically applied and thermocured.
 • IP65 finish consists of a five stage pretreatment regimen with a polymer primer sealer and top coated with a thermocurable "NAC" polyester powder coat finish.
 • The finish meets the AAMA 605.2 performance specification which includes passing a 3000 hour salt water test and free of adhesion per ASTM D2232 and corrosion resistance and meets cracking and chipping criteria up to 1000 Hz pounds.

Labels:
 • Complies with UL 1598 and CSA C22.2 No.250.0
 • Complies with UL 1598 and CSA C22.2 No.250.0
 • This product is approved by the Florida Fish and Wildlife Conservation Commission. See www.beaconlighting.com/ffwcc for more details.

Warranty:
 Five year limited warranty for more information visit: www.beaconlighting.com/warranty

CERTIFICATIONS/LISTINGS

BEACON **HUBBELL**

Beacon Products • 2041 5th Avenue Circle East, Bradenton, FL 34209 • Phone: 800-343-4528
 Due to our constant efforts to improve our products, product specifications are subject to change without notice.
 © 2020 Beacon Products. All Rights Reserved. • For more information visit our website: www.beaconproducts.com • Printed in USA, APRIL 2, 2019 10:13 AM

SRT1 EDGE-LIT

CEILING/SURFACE/GARAGE

DATE: _____ LOCATION: _____
 TYPE: **N1** PROJECT: _____
 CATALOG #:

BEACON

DRIVE

SPECIFICATIONS

HOUSING:
 • Die-cast aluminum housing ensures long electro-conformable life and luminaire performance.
 • Corrosion resistant powder coat finish passing a 3000 hour salt water test allows for simplified fixture installation.
 • One piece molded silicone gasket ensures weather proof seal.
 • Thermally isolated driver mounted to dedicated bracket reduces operating temperatures and increases driver life and reliability.

Optics:
 • Edge-lit acrylic light guide provides blended non-directional light for unobstructed visual comfort.
 • Choice of multiple light outputs with lumen range of 2000-6000.
 • Two distribution types: Type 5 Square Wide, Type 5 Concentrated.
 • Wide variety of CCT's and CR's offered: 3000K (DCC), 3000K (RCR), 3500K (RCR), 4000K (DCC), 4000K (RCR) or 5000K (DCC) CCT.

Electrical:
 • 0-10V dimming drivers are RfS compliant.
 • 0-10V dimming drivers are RfS compliant.
 • Standard beam model plate over standard 4" junction box or octagonal junction box (not shown) for simplified fixture installation.
 • Standard luminaire accepts a rigid or 3/4" NPT stem for pendant mounting and wall sociology (not shown).
 • Optional bird deterrent shroud available for field installation.

OPTIONAL CONTROLS:
 • Standalone occupancy sensor available for on/off or dimming operation.
 • Light option provides approximately 800 lumens and consumes only 8" additional watts.
 • Choice of multiple light outputs with lumen range of 2000-6000.
 • Vandal resistant wire gasket available as an option for factory installation or as an accessory for field installation.

CERTIFICATIONS:
 • Listed to UL598 for use in wet location, listed for 40°C to 40°C applications.
 • ICA approved with zero uplift for 3000K and warmer CCT's.
 • DLC (DesignLights Consortium) Qualified. Please refer to the DLC website for specific product qualifications at www.designlights.org.
 • IP65.
 • 5 year warranty.
 • See HUBBELL Warranty for additional information.

KEY DATA

Lumen Range	2000-6000
Wattage Range	15-55W
Efficacy Range (lm/W)	95-118
Reported Life (Hours)	50,000
Weight (lbs. kg)	8.0 (3.6)

BEACON **HUBBELL**

Beacon Products • 2041 5th Avenue Circle East, Bradenton, FL 34209 • Phone: 800-343-4528
 Due to our constant efforts to improve our products, product specifications are subject to change without notice.
 © 2020 Beacon Products. All Rights Reserved. • For more information visit our website: www.beaconproducts.com • Printed in USA, APRIL 2, 2019 10:13 AM

WALLPACK

DATE: _____ LOCATION: _____
 TYPE: **W1** PROJECT: _____
 CATALOG #:

EXO

LN2

SMALL LED LITEPACK

SPECIFICATIONS

CONSTRUCTION:
 • Rugged die-cast aluminum housing protects components and provides an architectural appearance.
 • Casting thermally conducts LED heat to optimize performance and long life.
 • Powder paint from powder durability in outdoor environments. Tested to meet 1000 hour salt spray rating.
 • Driver RoHS and P66.
 • ICA surge protector available as an option.
 • 3000K CCT nominal, 4000K CCT nominal, 5000K CCT nominal (70 CR).
 • Photometric reflector lens provides 40% uplift for increased vertical footcandle and forward light projection ideal for security lighting.
 • UMG at 600,000h Projected per IESNA TM-21-11, see table on page 5 for all values.

INSTALLATION:
 • Quick-mount adapter provides easy installation to wall or to recessed junction boxes (4" square junction box).
 • Designed for direct hook mount.
 • Optional 1/2" conduit stubs available (standards for control options and battery versions).

Electrical:
 • 50V-277V universal voltage 50/60Hz 0-10V dimming drivers.
 • 347V and 480V dimmable driver option available in 250W and 350W configurations.
 • Minimum operating temperature is -40°C to 40°C.
 • Drivers have greater than 100 power factor and less than 20% Total Harmonic Distortion.
 • UL surge protector available as an option.
 • 3000K CCT nominal, 4000K CCT nominal, 5000K CCT nominal (70 CR).
 • N1 Lighting Controls™ available that features dimming and occupancy sensor.
 • Integral Battery Backup provides emergency lighting for the required 90 minute path of egress. Uses 15 watts of power for about 2000 lumens.
 • Dual Driver option provides 2 drivers within luminaire but only one set of leads setting the luminaire. Values Dual Power Feed provides two drivers which can be wired independently at two sets of leads are extended from the luminaire. Both options can be included in one luminaire.

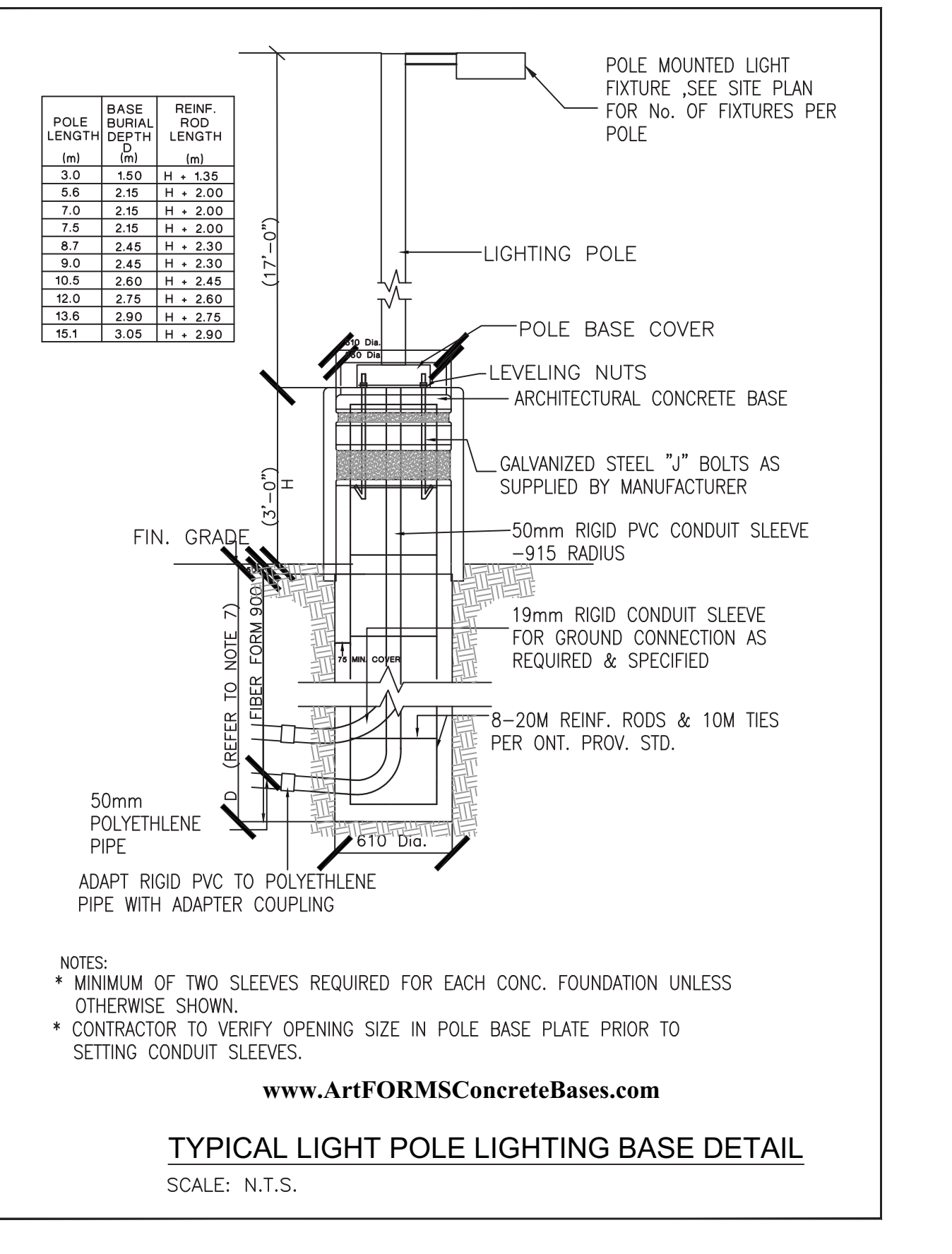
CERTIFICATIONS:
 • Listed to UL598 and CSA C22.2 No.250-04 for wet locations.
 • DLC (DesignLights Consortium Qualified), with some Premium Qualified configurations. Not all product variations on the page are DLC Qualified. Refer to http://www.designlights.org for the most up-to-date list.
 • Fixture is IP65 rated.
 • This product qualifies as a "designated country construction material" per FAR 25.225-11 Buy American-Construction Materials under Trade Agreements effective 04/23/2020.
 • 5 year warranty.

KEY DATA

Lumen Range	1000-5000
Wattage Range	10-45
Efficacy Range (lm/W)	50K
Weight (lbs. kg)	95 (24.5)

Current

currentlighting.com/en/seo
 © 2020 HUBBELL, Inc. All rights reserved. Information and specifications subject to change without notice. HUBBELL is a design or trademark of HUBBELL or one of its subsidiaries.
 HCL_LN2LED_wallpac_R01



ORDERING INFORMATION

ORDERING EXAMPLE: VPS/36N-80SK/74/1W/PC/SP/WL/D/R/B/T

SERIES	ENGINE/WATTS	LED COLOR	VOLTAGE	ELECTRICAL OPTIONS	HOUSE SIDE SHIELD	FINISH
VPS	36N-80	80W LED	120-277V	7799 7-Pin	BLK Backlight	BMT Black Matte
	36N-80	80W LED	120-277V	7799 7-Pin	BLK Backlight	BMT Black Matte
	48N-110	110W LED	120-277V	7799 7-Pin	BLK Backlight	BMT Black Matte
	60N-136	136W LED	120-277V	7799 7-Pin	BLK Backlight	BMT Black Matte

HOUSE SIDE SHIELD ACCESSORIES

HS/VP-5/10-18/XXX 90° shield front or back
 HS/VP-5/10-18/XXX 27° shield front or back
 HS/VP-5/10-18/XXX 27° shield front or back
 HS/VP-5/10-18/XXX 27° shield front or back

Accessories (Order Separately)

SW/2P: SafetySync interface software installed on USB flash drive for use with optional supplied PC (Windows based only). Includes SafetySync license, software and USB radio bridge module.
 SW/4P: Windows tablet and SafetySync interface software, includes tablet with pre-installed software, SafetySync license and USB radio bridge module.
 SW/6P: SafetySync USB radio bridge module only. Order if replacement is required or if an extra bridge module is required.
 SW/8P: Remote Control for SW/2P, 4P, 6P, 8P. Order at least one per project to program and control.
 SW/10P: SafetySync 7 Pin on future module On/Off/On, Daylight Sensor 120-480VAC.

Hubbell Control Solutions - Accessories (order separately)

HS/VP-5/10-18/XXX 90° shield front or back
 HS/VP-5/10-18/XXX 27° shield front or back
 HS/VP-5/10-18/XXX 27° shield front or back
 HS/VP-5/10-18/XXX 27° shield front or back

SiteSync 7-Pin Module

• SiteSync features a new form factor.
 • Available to be ordered for new construction or retrofit applications (with existing 7-pin receptacle).
 • Does not interfere with occupancy sensors.

BEACON **HUBBELL**

Beacon Products • 2041 5th Avenue Circle East, Bradenton, FL 34209 • Phone: 800-343-4528
 Due to our constant efforts to improve our products, product specifications are subject to change without notice.
 © 2020 Beacon Products. All Rights Reserved. • For more information visit our website: www.beaconproducts.com • Printed in USA, APRIL 2, 2019 10:13 AM

SRT1 EDGE-LIT

CEILING/SURFACE/GARAGE

DATE: _____ LOCATION: _____
 TYPE: _____ PROJECT: _____
 CATALOG #:

BEACON

DRIVE

ORDERING GUIDE

Example: SRT1-35-3K/50W/LNW/LB/WG

Series	Engine	CCT	Distribution	Voltage	Color/Finish	Options
SRT1 Edge-Lit	35 3000 Nominal	3K	Typ 5 Concentrated	120-277V	BLK Matte Textured	CD Custom Color
	35 3000 Nominal	3K	Typ 5 Concentrated	120-277V	BLK Matte Textured	CD Custom Color
	35 3000 Nominal	3K	Typ 5 Concentrated	120-277V	BLK Matte Textured	CD Custom Color
	35 3000 Nominal	3K	Typ 5 Concentrated	120-277V	BLK Matte Textured	CD Custom Color

PERFORMANCE DATA

Nominal Watts	Nominal Lumens	3K (3000K NOMINAL 70 CR)						4K (4000K NOMINAL 70 CR)						5K (5000K NOMINAL 70 CR)											
		SC	LPW	B	U	G	U	SC	LPW	B	U	G	U	SC	LPW	B	U	G	U						
15	2000	SC	2470	146.61	1	0	1	2459	145.99	1	0	1	2384	140.30	1	0	1								
20	3000	SC	3053	152.66	1	0	1	3028	151.21	1	0	1	2960	150.07	1	0	1								
35	4500	SC	4757	137.05	2	0	1	4734	136.42	2	0	1	4552	132.41	2	0	1								
55	6500	SC	6814	122.34	2	0	1	6782	121.62	2	0	1	6521	117.66	2	0	1								
		50W	6552	127.23	3	0	1	6521	126.66	3	0	1	6270	116.98	3	0	1								

ELECTRICAL DATA

Nominal Watts	System Watts	Line Voltage						Distancing Range						Absolute Voltage Range (0-10V V)										
		MAC	Hz	120	208	240	277	MAC	Hz	120	208	240	277	MAC	Hz	120	208	240	277					
15	16.9	120-277	50/60	0.94	0.98	0.07	0.06	10% to 100%	0V	10V														
20	21.6	120-277	50/60	0.98	0.93	0.09	0.08	10% to 100%	0V	10V														
35	34.6	120-277	50/61	0.29	0.01	0.04	0.02	10% to 100%	0V	10V														
55	54.9	120-277	50/62	0.46	0.26	0.23	0.20	10% to 100%	0V	10V														

Current

currentlighting.com/en/seo
 © 2020 HUBBELL, Inc. All rights reserved. Information and specifications subject to change without notice. HUBBELL is a design or trademark of HUBBELL or one of its subsidiaries.
 HCL_LN2LED_wallpac_R01

WALLPACK

DATE: _____ LOCATION: _____
 TYPE: _____ PROJECT: _____
 CATALOG #:

EXO

LN2

SMALL LED LITEPACK

ORDERING GUIDE

Example: LN2-48L-25-36/3-11WV-PC/SP/WL/D/R/B/T

Series	Light Engine	CCT/CR	Distribution	Voltage	Color/Finish	Options
LN2 Small LED LitePack	48L-25 3600 Lumens	3K 3000K 70 CR	Typ 3	120-277V	BLK Matte Textured	CD Custom Color
	48L-25 3600 Lumens	3K 3000K 70 CR	Typ 3	120-277V	BLK Matte Textured	CD Custom Color
	48L-25 3600 Lumens	3K 3000K 70 CR	Typ 3	120-277V	BLK Matte Textured	CD Custom Color
	48L-25 3600 Lumens	3K 3000K 70 CR	Typ 3	120-277V	BLK Matte Textured	CD Custom Color

REPLACEMENT PART - MADE TO ORDER

Ordering Number: _____ Description: _____

Current

currentlighting.com/en/seo
 © 2020 HUBBELL, Inc. All rights reserved. Information and specifications subject to change without notice. HUBBELL is a design or trademark of HUBBELL or one of its subsidiaries.
 HCL_LN2LED_wallpac_R01

CLIENT:

ISSUES and REVISIONS

ISSUE	DATE	DESCRIPTION
A	MAR. 30, 2023	ISSUED FOR SPA

DRAWINGS ARE NOT TO BE SCALED. USE ONLY DRAWINGS MARKED "ISSUED FOR CONSTRUCTION". CONTRACTOR TO CHECK AND VERIFY ALL DIMENSIONS AND CONDITIONS ON SITE AND REPORT ANY DISCREPANCIES TO THE CONSULTANT BEFORE PROCEEDING WITH THE WORK. THIS DRAWING IS THE COPYRIGHT PROPERTY OF THE CONSULTANT AND MUST BE RETURNED UPON REQUEST.

Millennium Engineering
 MECHANICAL & ELECTRICAL CONSULTANTS

5045 MAINWAY
 Suite 211
 Burlington, Ontario L7R 5H9
 Phone (905) 631-9294
 Fax (905) 631-7778
 millen@mill-eng.com

DESIGNED: **FA** DRAWN: **SA** APPROVED: **FA**

SCALE: **1:100** DATE: **DEC 2020**

PROJ: **16 & 18 MILL STREET APARTMENTS**
 16 & 18 MILL ST., GEORGETOWN, ON

DWG. **PHOTOMETRIC DATA**

CAD FILE: **20-033 E02SP** PROJ No: **20-033**

DWG No. **E02SP_A**