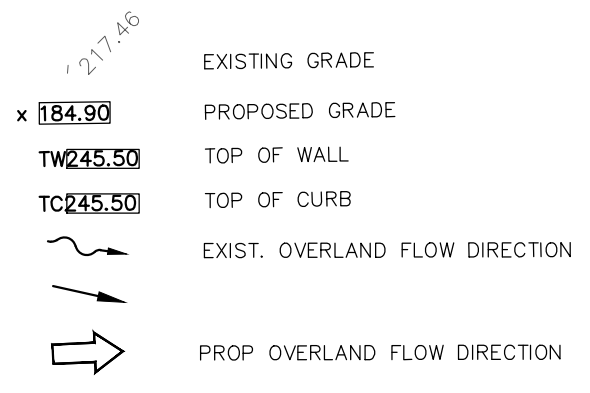


DRAINAGE NOTES

- BACKFILL AROUND MANHOLES AND CATCHBASINS SHALL BE OF MINIMUM 1.5 M APPROVED GRANULAR MATERIAL, COMPACTED BY MECHANICAL MEANS TO 100% S.P.M.D.D.
- STORM MANHOLES SHALL BE AS PER O.P.S.D. 701.30 TO 701.060 INCLUSIVE. FRAMES AND LIDS TO BE PER O.P.S.D. 401.01.
- CATCHBASINS SHALL BE AS PER OPSD. 705.010 WITH FRAME AND GRATES AS PER OPSD. 400.110. CATCHBASIN CONNECTIONS SHALL BE AS PER OPSD. 708.030. 60 LEAD 250mm DIA. PVC SDR-35, CONFORMING TO CSA SPECIFICATION B182.2 AND B182.4 OR LATEST REVISION THEREOF.
- ALL LATERALS TO BE CONNECTED TO THE NEW PIPE USING MANUFACTURED TEE AND TO THE EXISTING PIPE USING PRE-MANUFACTURED SADDLE AND STAINLESS STEEL STRAP. MARKERS SHALL BE PROVIDED AT THE END OF PIPE FOR ALL SERVICES.
- ALL STORM SEWERS SHALL BE CONCRETE PIPE. STORM SEWER OF 375mm DIA OR LESS MAY BE SUBSTITUTED TO POLYVINYL CHLORIDE (P.V.C.) UPON APPROVAL FROM THE TOWN OF HALTON HILLS ENGINEERING DEPARTMENT. ALL PVC STORM SEWER WITH FITTINGS SHALL MEET THE CSA AND ASTM REQUIREMENTS AS NOTED WITHIN OPSD 1841. THE BASIC MANUFACTURE MATERIAL OF THE PIPE SHALL CONFORM TO ASTM D-3034 AND OPS51841.
- FINGER SUBDRAINS SHALL BE 100mm DIA., 6.0m MIN. LENGTH, PERFORATED & WRAPPED IN FILTER FABRIC ON ALL FOUR SIDES.
- ALL SURFACE DRAINAGE WILL BE SELF CONTAINED, COLLECTED AND DISCHARGED AT A LOCATION TO BE APPROVED PRIOR TO THE ISSUANCE OF A BUILDING PERMIT.
- THE EXISTING DRAINAGE PATTERN WILL BE MAINTAINED EXCEPT NOTED.
- ALL STORM SYSTEM MATERIAL, MANUFACTURE, METHOD OF CONSTRUCTION SHALL CONFORM WITH CITY OF HALTON HILLS STANDARDS AS PER "TOWN OF HALTON HILLS SUBDIVISION MANUAL, 1999-06-23".
- THE CONSULTANTS RELY ON SURVEYS AND DIMENSIONS BY OTHERS.



NOTE:

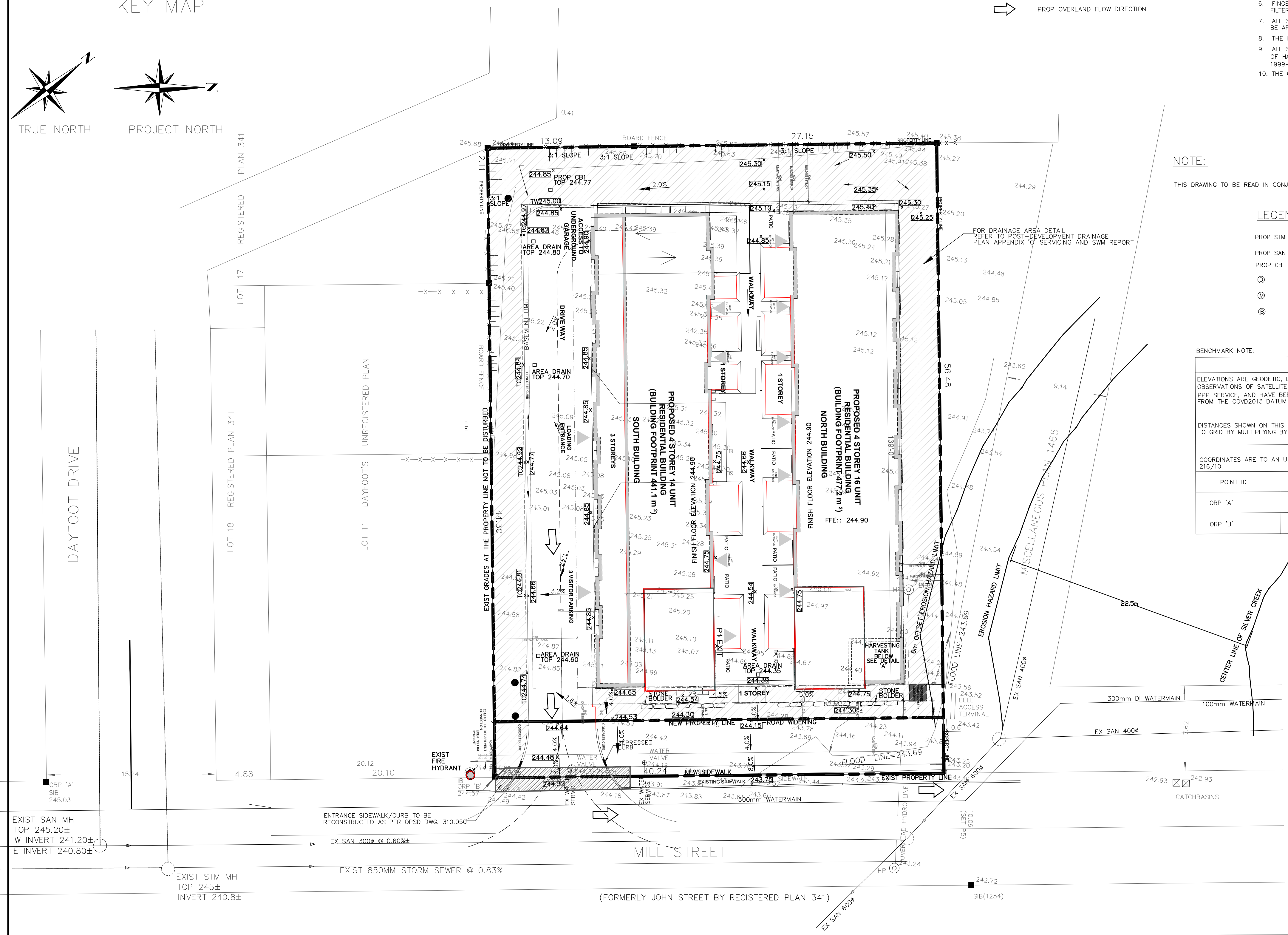
THIS DRAWING TO BE READ IN CONJUNCTION WITH SITE SERVICING PLAN(S1) & NOTES-004 DRAWINGS

LEGEND

- PROP STM MH PROPOSED STORM MAINTENANCE HOLE
- PROP SAN MH PROPOSED SANITARY MAINTENANCE HOLE
- PROP CB PROPOSED CATCH BASIN
- ⊕ PROP DETECTOR CHECK VALVE
- ⊙ PROP DOMESTIC WATER METER
- ⊖ PROP BACK CHECK VALVE

BENCHMARK NOTE:

NOTES	
ELEVATIONS ARE GEODETIC, DERIVED FROM SIMULTANEOUS OBSERVATIONS OF SATELLITES, AS CORRECTED BY NRCAN'S PPP SERVICE, AND HAVE BEEN CONVERTED FROM THE FROM THE CGVD2013 DATUM TO THE CGVD1978 DATUM.	
DISTANCES SHOWN ON THIS PLAN ARE GROUND AND CAN BE CONVERTED TO GRID BY MULTIPLYING BY THE COMBINED SCALE FACTOR OF 0.99966.	
COORDINATES ARE TO AN URBAN ACCURACY AS PER s.14(2) OF O.REG. 216/10.	
POINT ID	ELEVATION
ORP 'A'	245.03
ORP 'B'	244.57



BENCHMARK NOTE:

ELEVATIONS ARE GEODETIC, DERIVED FROM SIMULTANEOUS OBSERVATIONS OF SATELLITES, AS CORRECTED BY NRCAN'S PPP SERVICE, AND HAVE BEEN CONVERTED FROM THE FROM THE CGVD2013 DATUM TO THE CGVD1978 DATUM.

NO.	REVISION	DATE	INIT.
3	ISSUED FOR APPROVAL AS PER SP CHANGES & TOWN'S COMMENTS	FEB 28 2023	MFI
2	ISSUED FOR APPROVAL	APR 29 2022	MFI
1	ISSUED FOR APPROVAL	DEC 09 2020	MFI

BENCHMARK NOTE
 TOPOGRAPHIC INFORMATION MEASURED 2007. THIS IS NOT A PLAN OF SURVEY.
 BENCHMARK: HBM 064
 ELEVATION: 253.45
 TEMPORARY BENCHMARK
 ELEVATION: 254.28
 TOP OF RAILROAD SPIKE IN THE SOUTH SIDE OF THE FRS HYDRO POLE EAST OF NORMANDY BOULEVARD ON GUELPH STREET.
 The location and extent of all existing utilities are not necessarily shown on this plan, and where shown, are to be considered approximate only. All Contractors shall inform themselves of the exact location and extent of all existing services prior to the start of construction, and shall assume all liabilities for damage to them or delays resulting from their actual extent and location.

LEGEND	
○ LIGHT STANDARD	— UNDERGROUND UTILITIES
○ T TRAFFIC LIGHT	— HYDRO CABLES
○ S SIGN	— W WATERMANS
○ B BELL POLE	— G GASMANS
○ H HYDRO POLE	— B BELL CABLES
○ HD HYDRANT	— CAP OR PLUG
○ G GUY AND ANCHOR	— SANITARY SEWER
○ M MANHOLE EXISTING	— STORM SEWER
○ M MANHOLE PROPOSED	— COMBINED SEWER
□ CATCHBASIN EXISTING	
■ CATCHBASIN PROPOSED	
■ S.B. STANDARD IRON BAR	

RD DESIGN
 RD CHECKED BY
 MI PROJ. SUPVR.
 PROJECT ENGINEER

TOWN OF HALTON HILLS
REGION OF HALTON
 PREMIER ENGINEERING SOLUTIONS
 CIVIL ENGINEERS
 3294 ALPACA AVENUE, MISSISSAUGA ONTARIO L5M 7V3
 PHONE: (905) 817-1294 FAX: (905) 817-1299

REGISTERED PROFESSIONAL ENGINEER
 M F ISMAIL
 FEB 28, 2023
 PROVINCE OF ONTARIO

RESIDENTIAL DEVELOPMENT
16-18 MILL STREET
HALTON HILLS, ON
GRADING AND DRAINAGE PLAN

FIELD NOTES	
DATE	
SCALE	1:200
DWG. No.	SG1
MUN. REF. No.	
SITE PLAN APPLICATION	3