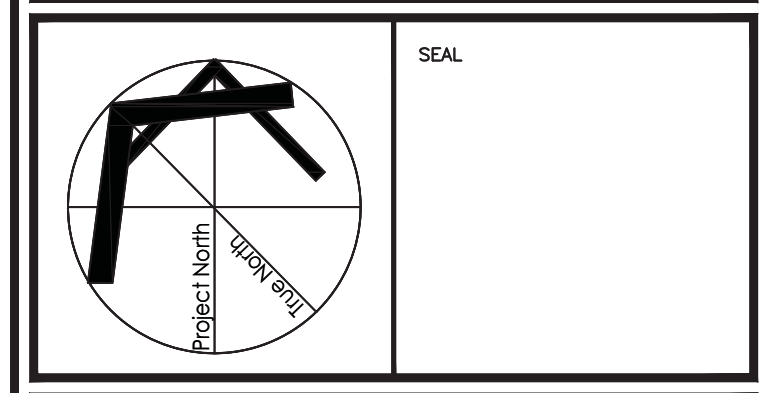


KEY MAP:

ISSUES and REVISIONS		
ISSUE	DATE	DESCRIPTION
1	DEC. 06, 2022	ISSUED FOR HYDRO

DRAWINGS ARE NOT TO BE SCALED. USE ONLY DIMENSIONS MARKED "ISSUED FOR CONSTRUCTION". CONTRACTOR TO CHECK AND VERIFY ALL DIMENSIONS AND CONDITIONS ON SITE AND REPORT ANY DISCREPANCIES TO THE CONSULTANT BEFORE PROCEEDING WITH THE WORK. THIS DRAWING IS THE COPYRIGHT PROPERTY OF THE CONSULTANT AND MUST BE RETURNED UPON REQUEST.



Millennium Engineering
MECHANICAL & ELECTRICAL CONSULTANTS

Creating High-Performance Buildings®

Mechanical | Electrical | Energy Efficiency | Commissioning

5045 MAINWAY, Suite 211
Burlington, Ontario L7L 5H9

Phone (905) 631-9294
Fax (905) 631-7778
millennium@mill-eng.com

DESIGNED FA	DRAWN SA	APPROVED FA
SCALE 1:100	DATE DEC 2022	

PROJ.
**16 & 18 MILL STREET,
GEORGETOWN
DEVELOPMENT**

DWG.
ELECTRICAL SITE PLAN

CAD FILE 20-033E0.1	PROJ No. 20-033
-------------------------------	---------------------------

DWG No.
E0.1_A

- 1 SITE PLAN**
SCALE: 1:100
- SITE PLAN KEY NOTES**
- ① PRIMARY HYDRO UTILITY SERVICE IS PROVIDED BY HALTON HILLS HYDRO.
 - ② PRIMARY UNDER GROUND CONCRETE ENCASED DUCT BANK.
 - ③ UNDER GROUND HYDRO SERVICE DUCT BANK WITH SECONDARY CONDUCTORS TO MSB-L AT MAIN ELECTRICAL ROOM AT LOWER LEVEL-P1.
 - ④ THE HYDRO UTILITY POLE ON MILL STREET.
 - ⑤ UTILITY TRANSFORMER TX-G ON CONCRETE PAD AND GROUNDING.

Meter Center Layout

Not for Construction Purpose

Seq# : 1 [Meter Centers]

System : 120/208V 3Ph 4W,

Dimension of each stack :

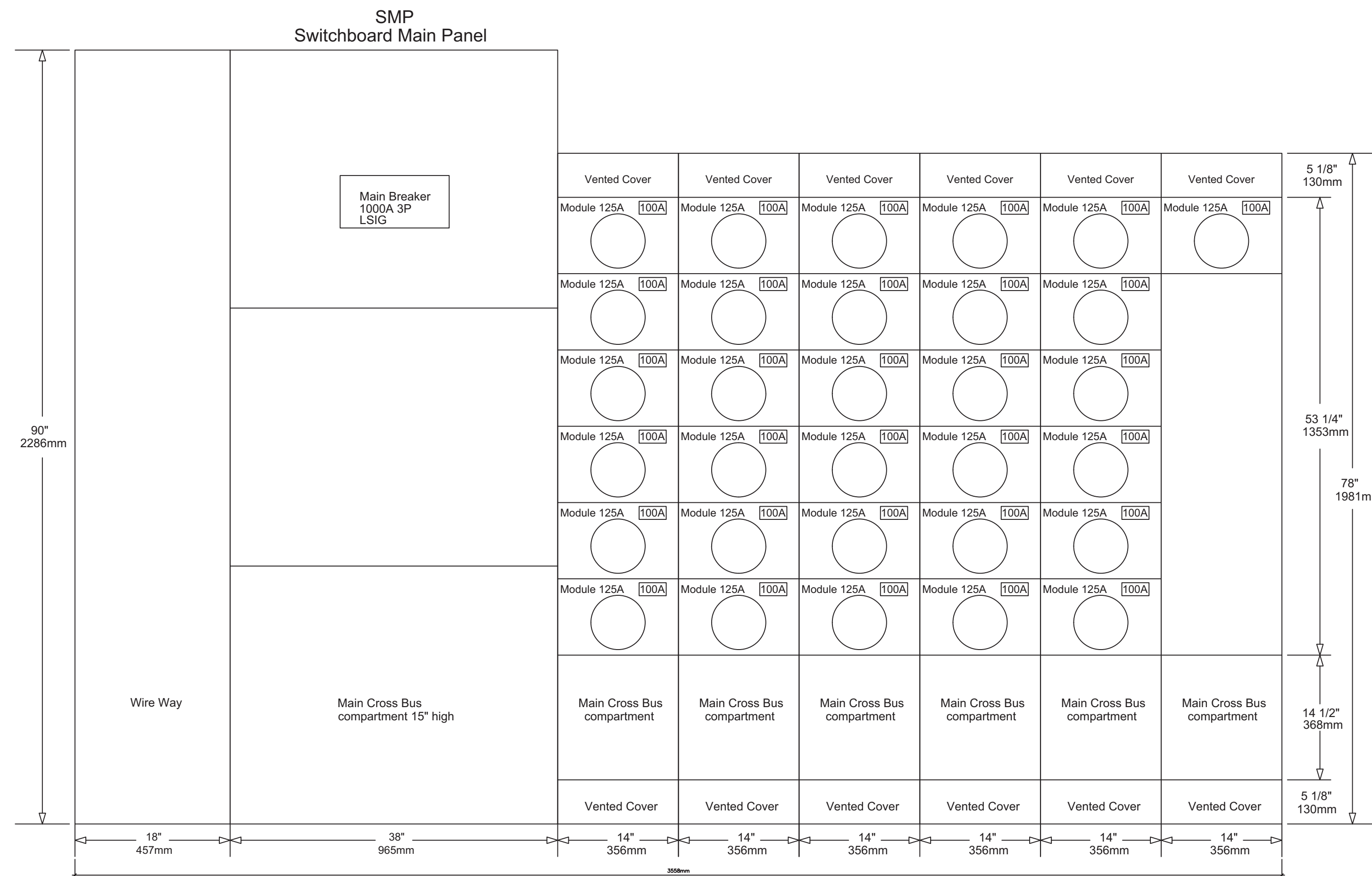
Height : 78" (1981mm)

Width : 14" (356mm)

Depth : 7 1/4" (184mm)

Height of the modules : 90" (2286mm)

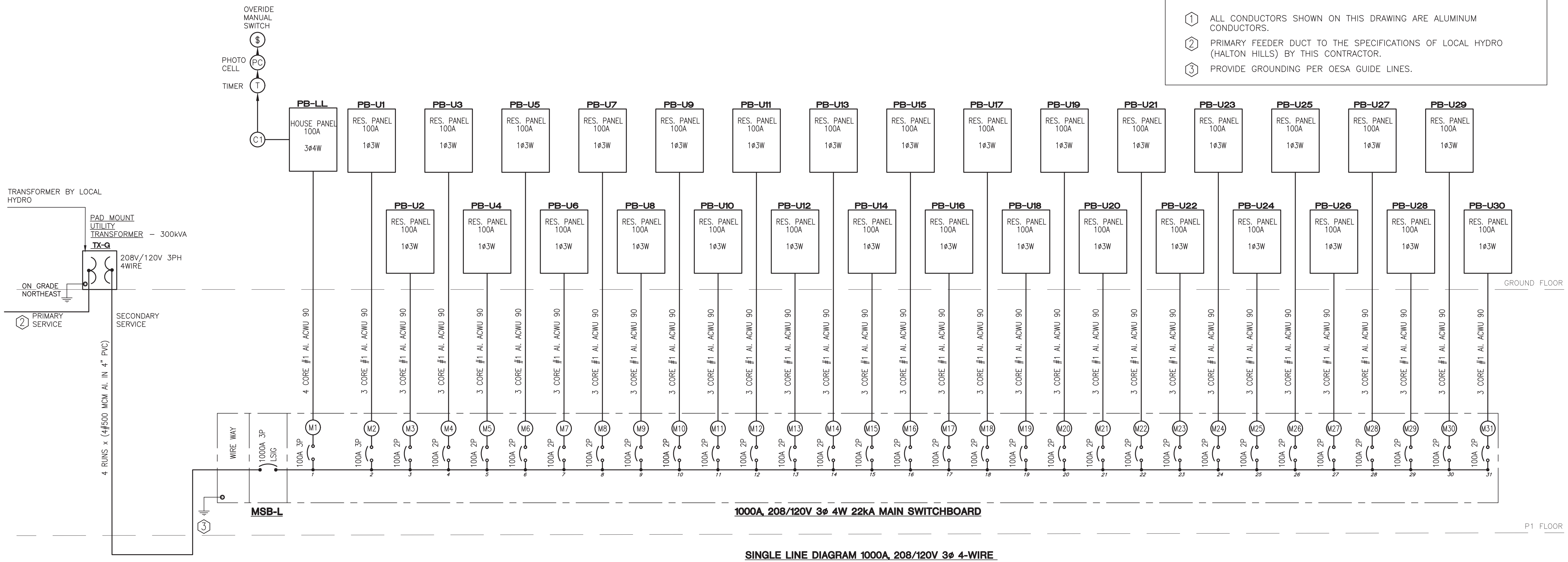
125A Module: 8 7/8" (225.5mm) (31 Modules)



MSB-L
MAIN SERVICE CIRCUIT BREAKER AND METERING CABINET
3558 X 184 X 2286 (WXDXH mm)

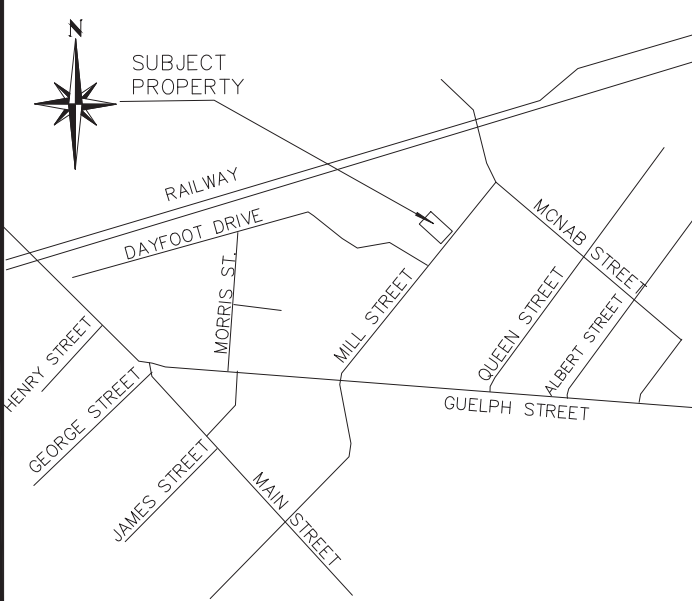
KEY NOTES

- 1 ALL CONDUCTORS SHOWN ON THIS DRAWING ARE ALUMINUM CONDUCTORS.
- 2 PRIMARY FEEDER DUCT TO THE SPECIFICATIONS OF LOCAL HYDRO (HALTON HILLS) BY THIS CONTRACTOR.
- 3 PROVIDE GROUNDING PER OESA GUIDE LINES.



1000A, 208/120V 3Φ 4W 22kA MAIN SWITCHBOARD

SINGLE LINE DIAGRAM 1000A, 208/120V 3Φ 4-WIRE

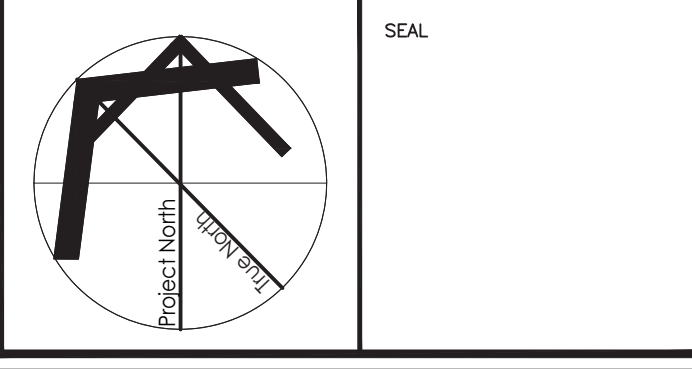


KEY MAP:

ISSUES and REVISIONS

ISSUE	DATE	DESCRIPTION
1	DEC. 06, 2022	ISSUED FOR HYDRO

DRAWINGS ARE NOT TO BE SCALED. USE ONLY DIMENSIONS MARKED "ISSUED FOR CONSTRUCTION". CONTRACTOR TO CHECK AND VERIFY ALL DIMENSIONS AND CONDITIONS ON SITE AND REPORT ANY DISCREPANCIES TO THE CONSULTANT BEFORE PROCEEDING WITH THE WORK. THIS DRAWING IS THE COPYRIGHT PROPERTY OF THE CONSULTANT AND MUST BE RETURNED UPON REQUEST.



Millennium Engineering
MECHANICAL & ELECTRICAL CONSULTANTS
Creating High-Performance Buildings
Mechanical | Electrical | Energy Efficiency | Commissioning
5045 MAINWAY Suite 211 Phone (905) 631-9294
Burlington, Ontario L7L 5H9 Fax (905) 631-7778
millennium@mil-eng.com

DESIGNED FA	DRAWN SA	APPROVED FA
SCALE N.T.S	DATE DEC 2022	

**16 & 18 MILL STREET,
GEORGETOWN
DEVELOPMENT**

DWG. No. **SINGLE LINE DIAGRAM**

CAD FILE 20-033E3.0	PROJ. No. 20-033
DWG. No.	

E3.0 A

20-033
6-Dec-22

Peak Demand Load Estimate (kW)
OESC Rule 8-2-2 1.

16-18 Mill Street, George Town

Unit Qty		FCU,kW	(kW)
1	100% one unit	1 X 3.5	16
2	65% 2 units	2 X 3.5	21
2	40% 2 units	2 X 3.5	13
15	25% 15 units	15 X 3.5	61
10	10% 10units	10 X 3.5	16
30	S. total		128
		Cooling	105
		S. Total kW	233
		Land lord service	10

		service size 1000A 120/208V	
EV chargers	25	Peak Mxm. Demand Amps	
	268	743	928

Proposed transformer 300 kVA, 13.8 kV/ 208V-120V Y

Prepared by FA

