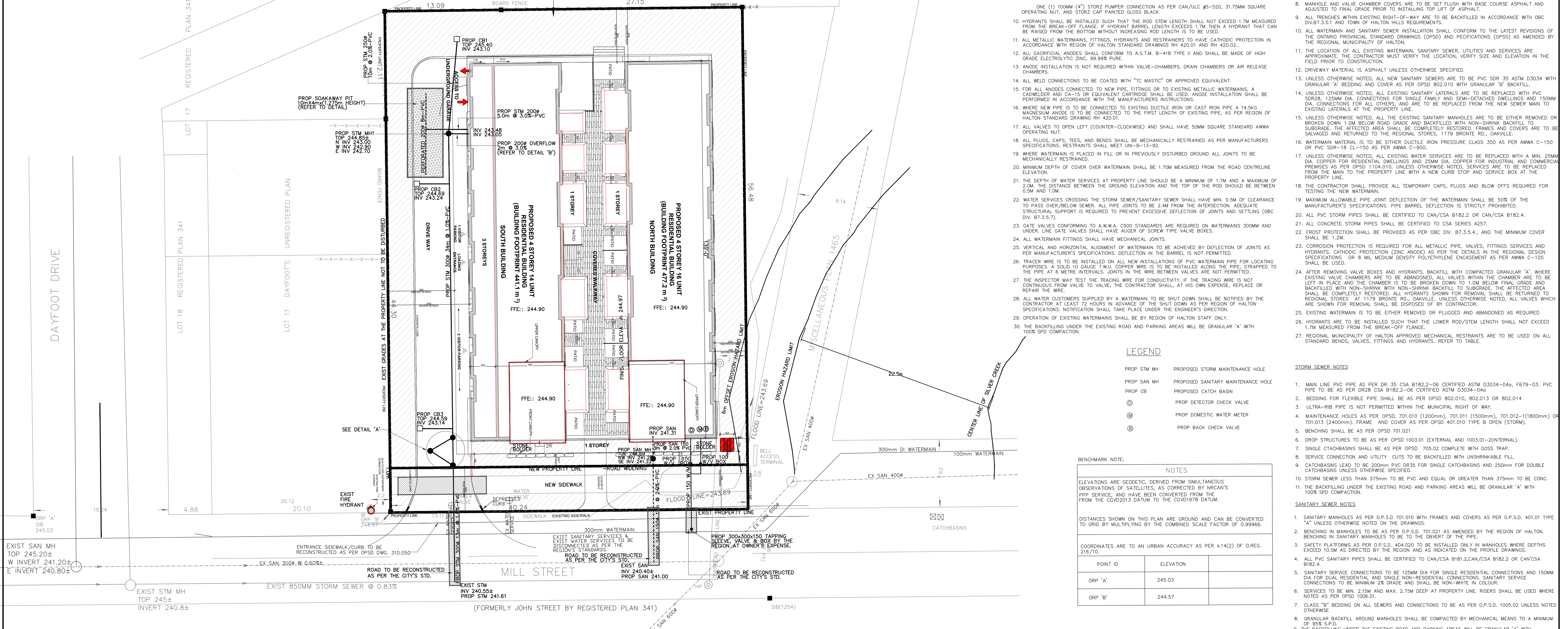
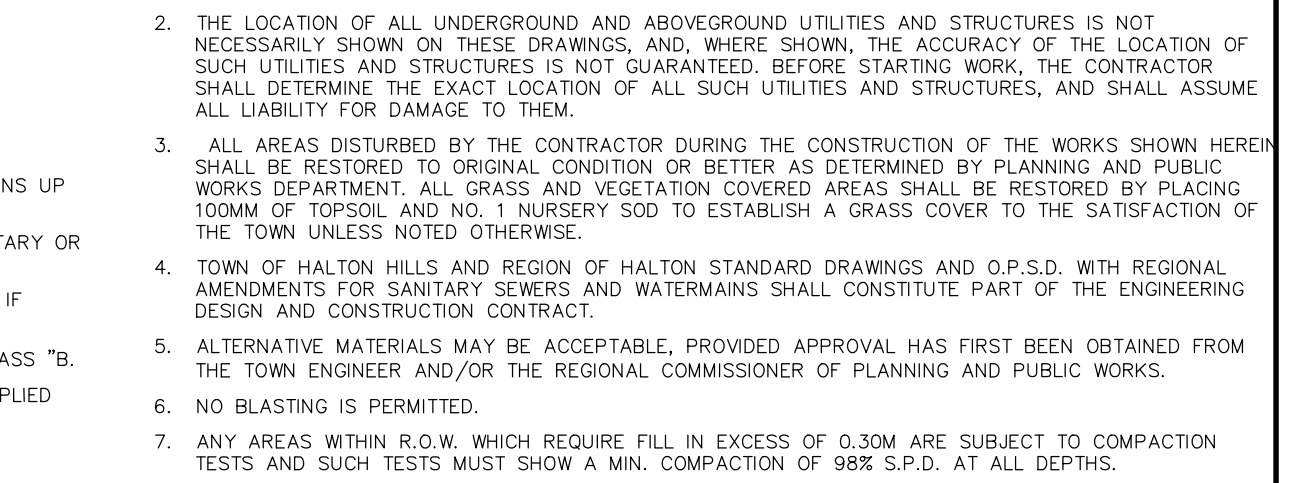
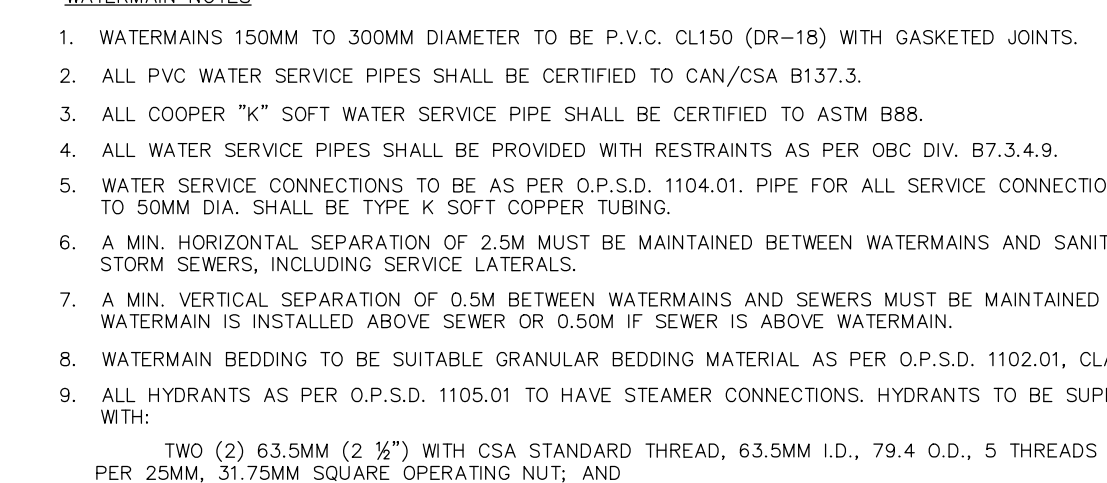
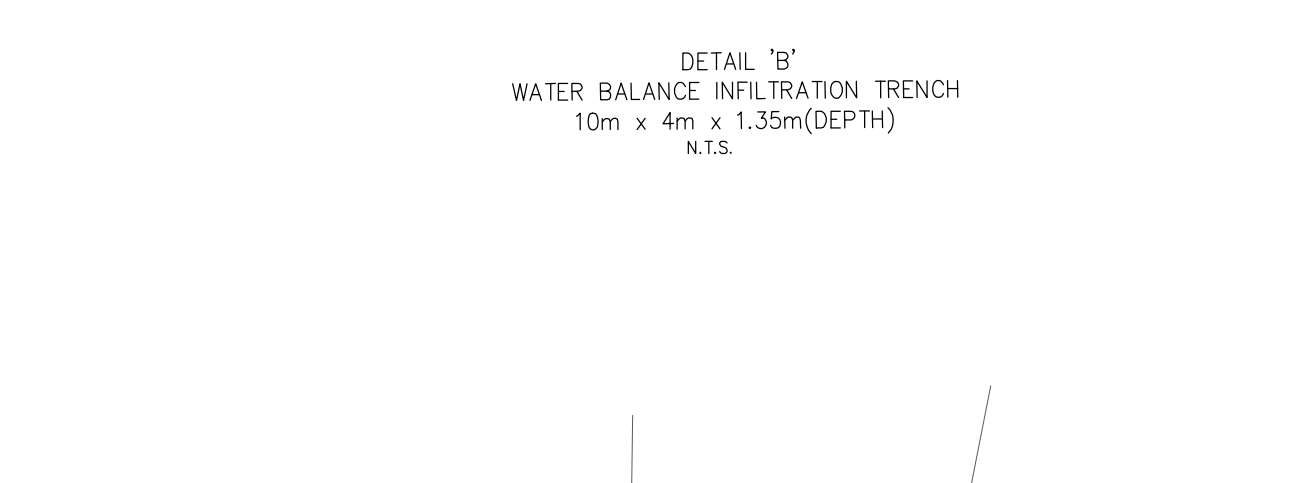
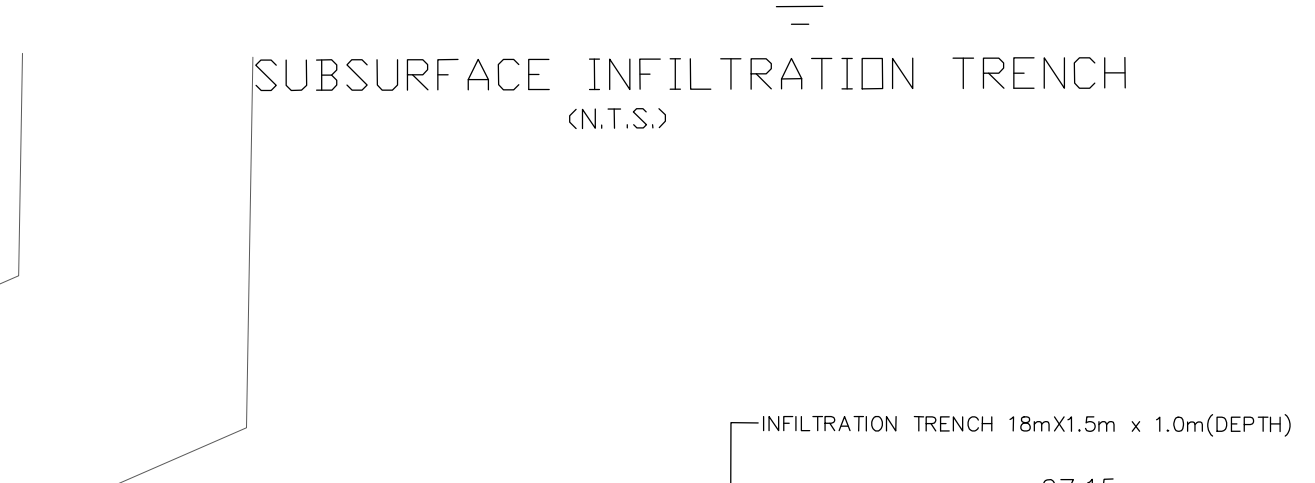
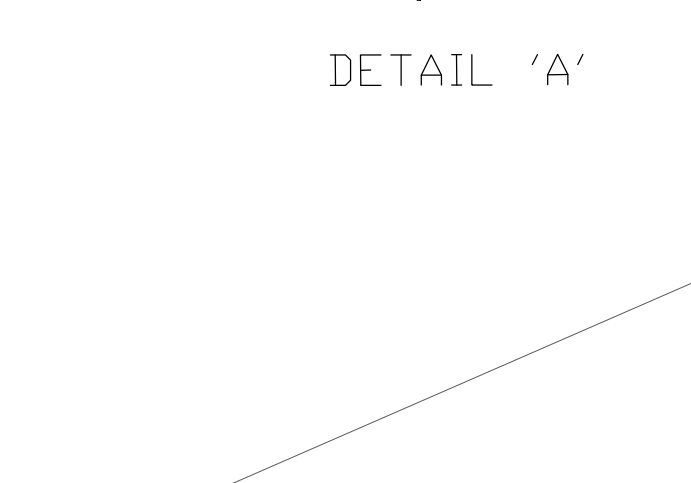
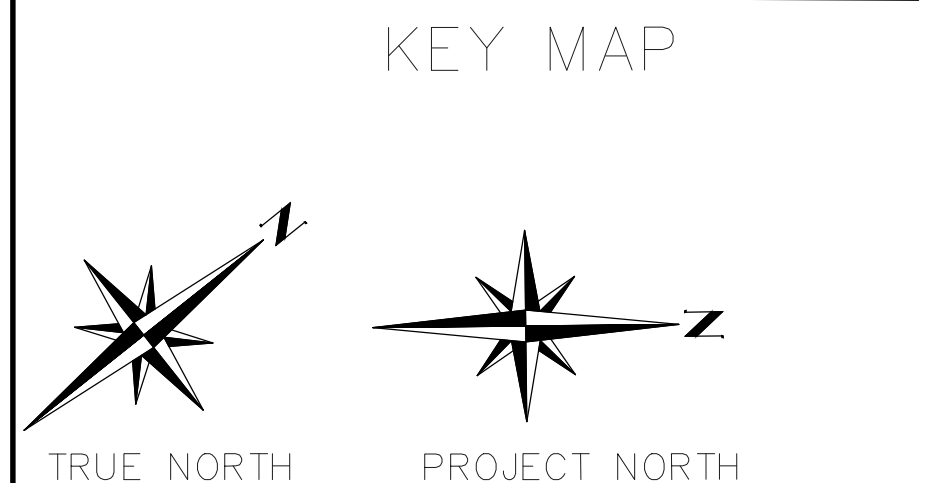


**REGIONAL APPROVAL**  
 REGION DESIGN OF WATER &/OR WASTEWATER SERVICES APPROVED SUBJECT TO DETAIL CONSTRUCTION CONFIRMING TO HALTON REGION STANDARDS & SPECIFICATIONS & LOCATION APPROVAL FROM AREA MUNICIPALITY.  
 SIGNED \_\_\_\_\_ DATED \_\_\_\_\_  
 PLANNING & PUBLIC WORKS DEPT.  
 The Applicant Should be aware that the approval of water system on private property is responsibility of the Local Municipality. Regardless, the Applicant must ensure that the Region of Halton's Standards and Specifications are met (the Design Criteria, Standard Drawings & Specifications manual may be obtained thru the Infrastructure Management Group at (905-825-6032) Furthermore, all water quality tests must be completed to the Region of Halton's Specification, before the water supply can be turned on.



**BENCHMARK NOTE**  
 TOPOGRAPHIC INFORMATION MEASURED 2007. THIS IS NOT A PLAN OF SURVEY.  
 BENCHMARK: HHEM 064  
 ELEVATION: 233.65  
 TEMPORARY BENCHMARK: ELEVATION: 254.29  
 TOP OF RAILROAD SPIKE IN THE SOUTH SIDE OF THE FERS HYDRO POLE EAST OF NORMANDY BOULEVARD ON GUELPH STREET.  
 The location and extent of all existing utilities are not necessarily shown on this plan, and where shown, are to be considered approximate only. All Contractors shall inform themselves of the exact location and extent of all existing services prior to the start of construction, and shall assume all liabilities for damage to them or delays resulting from their actual extent and location.

NO.	ISSUED FOR APPROVAL	REVISION	DATE	INIT.
1	ISSUED FOR APPROVAL		APR 29 2022	MFI
2	ISSUED FOR APPROVAL		DEC 09 2020	MFI

**LEGEND**

SYMBOL	DESCRIPTION
○	LIGHT STANDARD
○	TRAFFIC LIGHT
○	SIGN
○	BELL POLE
○	HYDRO POLE
○	HYDRO POLE
○	HYDRO POLE
○	GUY AND ANCHOR
○	MANHOLE EXISTING
○	MANHOLE PROPOSED
○	CATCHBASIN EXISTING
○	CATCHBASIN PROPOSED
○	S.I.B. STANDARD IRON BAR

**UNDERGROUND UTILITIES**

SYMBOL	DESCRIPTION
—	HYDRO CABLES
—	WATERMANS
—	GASMANS
—	BELL CABLES
—	CAP OR PLUG
—	SANITARY SEWER
—	STORM SEWER
—	COMBINED SEWER

**RD**  
 DESIGN  
 RD  
 CHECKED BY  
 MI  
 PROJ. SUPVR.

**TOWN OF HALTON HILLS**  
**REGION OF HALTON**  
**PREMIER ENGINEERING SOLUTIONS**  
 CIVIL ENGINEERS  
 3294 ALPACA AVENUE, MISSISSAUGA ONTARIO L5M 7V3  
 PHONE: (905) 817-1294 FAX: (905) 817-1299

**REGISTERED PROFESSIONAL ENGINEER**  
**M F ISMAIL**  
 APR 29, 2022  
 PROVINCE OF ONTARIO  
 PROJECT ENGINEER

**TOWN OF HALTON HILLS**  
**REGION OF HALTON**  
**RESIDENTIAL DEVELOPMENT**  
**16-18 MILL STREET**  
**HALTON HILLS, ON**  
**SITE SERVING PLAN**

**FIELD NOTES**

DATE	
SCALE	1:200
DWG. No.	SS1
MUN. REF. No.	
SITE PLAN APPLICATION	2

**LEGEND**

SYMBOL	DESCRIPTION
○	LIGHT STANDARD
○	TRAFFIC LIGHT
○	SIGN
○	BELL POLE
○	HYDRO POLE
○	HYDRO POLE
○	HYDRO POLE
○	GUY AND ANCHOR
○	MANHOLE EXISTING
○	MANHOLE PROPOSED
○	CATCHBASIN EXISTING
○	CATCHBASIN PROPOSED
○	S.I.B. STANDARD IRON BAR